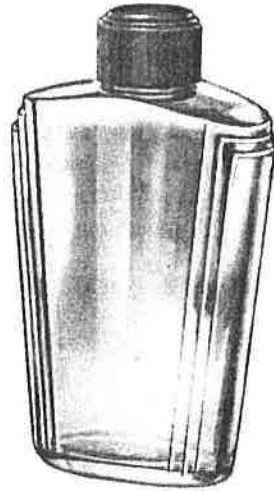




A-342
A-340



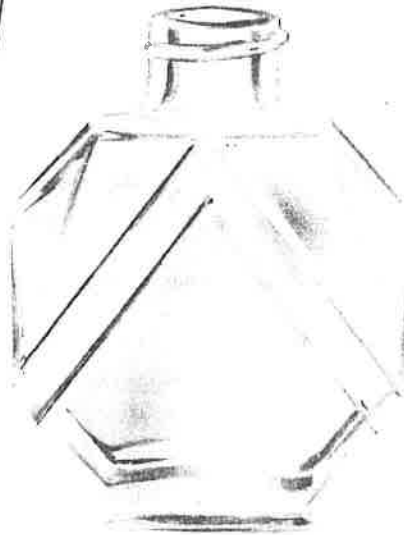
A-4864-IS
A-4863-IS
A-4862-IS
A-4827-IS



A-4350



A-4399



A-4161

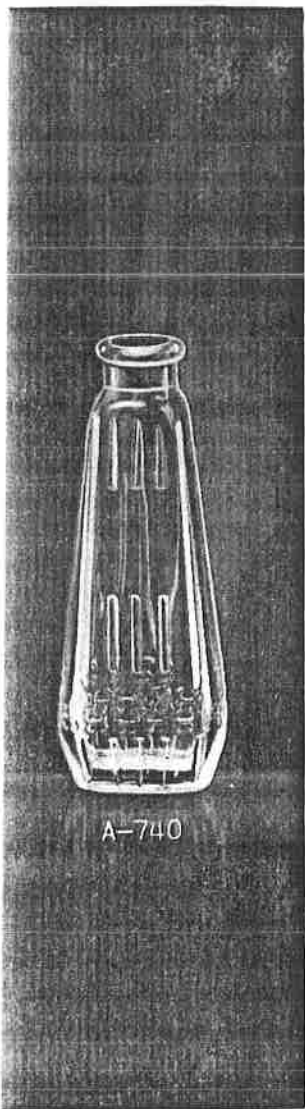


A-734

MOLD No.	CAPACITY IN OUNCES	IDEAL FILLING POINT	WEIGHT IN OUNCES	HEIGHT IN INCHES	WIDTH IN INCHES	THICKNESS IN INCHES	FINISH
A-4827-IS	1/8	1-13/32	9/16	1-3/4	1-1/32	39/64	13-425
A-4862-IS	1/4	1-25/32	3/4	2-1/8	1-19/64	41/64	13-425
A-4863-IS	1/2	2-3/16	1-1/8	2-17/32	1-31/64	3/4	15-425
A-734	1/2	3-3/16	1-15/16	3-3/4	1-1/2	49/64	#2 SHELL CORK
A-340	1/2	1-5/8	1-3/8	2-17/64	1-23/32	49/64	#2 CORK
A-4350	1/2	1-15/32	1-5/16	2-15/64	1-45/64	23/32	15-425 15-300
A-4161	3/4	2-9/64	1-3/4	2-41/64	2-1/8	3/4	20-400
A-342	1	1-15/16	2-1/2	3	2-3/16	23/32	#3 CORK 20-400
A-4399	1	1-15/16	2-5/8	2-25/32	2-1/2	1	20-400
A-4864-IS	1	2-19/32	1-5/8	2-15/16	1-27/32	63/64	15-425

PERFUMES





A-740



A-703



A-841



A-713



A-4125



A-1576



A-1626



A-3041

PERFUMES



MOLD No.	CAPACITY IN OUNCES	IDEAL FILLING POINT	WEIGHT IN OUNCES	HEIGHT IN INCHES	WIDTH IN INCHES	THICKNESS IN INCHES	FINISH
A-841	1/2	2-5/32	1-3/4	2-27/32	1-1/8	1-1/32	#3 CORK
A-713	1/2	2-1/16	1-5/8	2-23/32	2	47/64	#2 SHELL CORK
A-703	1/2	BASE OF NECK	1-1/2	2-41/64	1-57/64	27/32	#2 CORK
A-4125	5/8	1-15/16	2	3-3/16	1-23/64	1-1/64	20-300
A-1626	5/8	BASE OF NECK	2	3-5/16	1-41/64	63/64	#3 CORK
A-1576	1	2-9/32	2	3-5/32	1-25/64	1-9/32	#2 CORK 20-300-400
A-3041	1	2-1/2	2-1/2	3-11/16	1-21/64	1-21/64	SPECIAL SPRINKLER
A-740	1	3-57/64	2-1/2	4-15/32	1-41/64	29/32	#2 1/2 SHELL CORK



A-3857



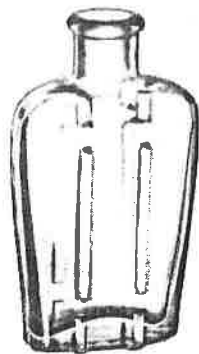
A-714



A-743



A-741



A-752



A-1309



A-706



A-748

MOLD NO.	CAPACITY IN OUNCES	IDEAL FILLING POINT	WEIGHT IN OUNCES	HEIGHT IN INCHES	WIDTH IN INCHES	THICKNESS IN INCHES	FINISH
A-1309	1/2	BASE OF NECK	1-1/2	2-31/32	1-3/16	7/8	#2 SHELL CORK
A-752	1/2	"	1-1/2	2-15/16	1-41/64	43/64	"
A-714	1/2	1-7/8	1-3/4	2-31/64	2-15/64	51/64	"
A-741	1/2	BASE OF NECK	1-5/8	3-3/8	1-7/16	23/32	"
A-706	1/2	"	1-1/2	3-1/4	1-29/32	45/64	"
A-743	1/2	"	1-1/2	2-9/32	2-13/64	43/64	"
A-3857	5 DR.	1-1/2	1-3/4	2-7/32	1-23/32	1-5/64	22-400
A-748	1	BASE OF NECK	2-5/8	4-15/64	1-55/64	7/8	#2 1/2 SHELL CORK

PERFUMES





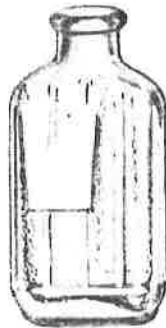
A-716



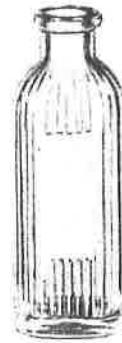
A-3191



A-710



A-3181



A-751



A-705



A-712

PERFUMES



MOLD No.	CAPACITY IN OUNCES	IDEAL FILLING POINT	WEIGHT IN OUNCES	HEIGHT IN INCHES	WIDTH IN INCHES	THICKNESS IN INCHES	FINISH
A-3181	1/2	BASE OF NECK	1-3/4	3-1/16	1-17/32	47/64	#2 SHELL CORK
A-716	1/2	"	1-3/4	2-15/64	2-13/32	3/4	"
A-751	1/2	"	1-1/2	3-5/16	1-11/64	25/32	"
A-705	1/2	"	1-1/2	2-41/64	1-63/64	47/64	"
A-3191	1	2-7/16	2-1/2	2-63/64	2-23/64	13/16	#1 CORK
A-710	1-7/8	2	3-1/4	2-11/16	2-13/64	DIAM.	#2 1/2 SHELL CORK
A-712	2	2-5/8	3-5/8	3-5/16	3-7/32	1-3/16	"



A-3136



A-724



A-1820



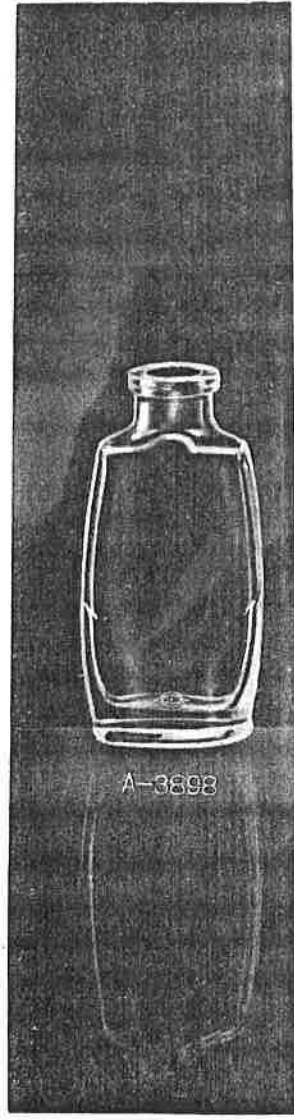
A-719



A-3701



A-1293



A-3898

MOLD NO.	CAPACITY IN OUNCES	IDEAL FILLING POINT	WEIGHT IN OUNCES	HEIGHT IN INCHES	WIDTH IN INCHES	THICKNESS IN INCHES	FINISH
A-3136	1/2	BASE OF NECK	1-3/8	2-35/64	1-1/2	43/64	#2 CORK
A-719	1/2	"	1-3/8	2-53/64	1-13/16	9/16	#1 CORK
A-724	1/2	"	1-1/2	2-17/32	2-1/32	47/64	#2 CORK
A-3898	6 DR.	2-13/16	2-1/2	3-5/8	1-23/32	7/8	#3 CORK
A-3701	1	2-7/8	2-5/8	3-5/8	1-9/16	1-3/64	#2 SHELL CORK
A-1293	1	BASE OF NECK	2-3/16	3-7/64	1-15/32	1-3/32	18-400
A-1820	1-3/8	2-5/8	2-1/2	3-11/32	2-1/16	7/8	SP. Sc. CAP

PERFUMES

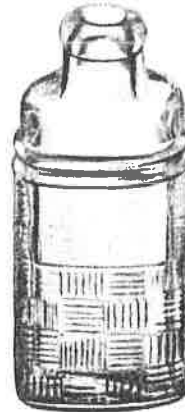




A-3144



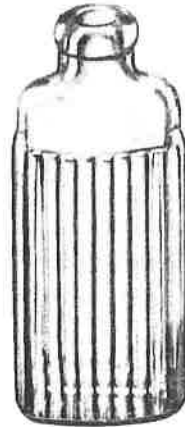
A-1147



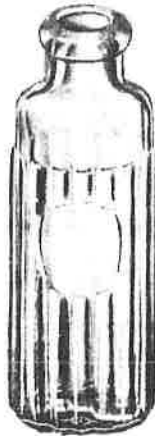
A-3146



A-3007



A-3182



A-3133

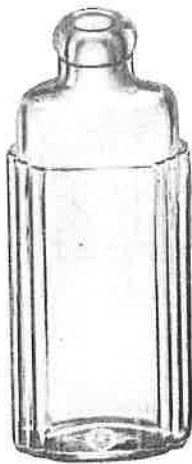


A-3778

PURSE PERFUMES



MOLD No.	CAPACITY IN OUNCES	IDEAL FILLING POINT	WEIGHT IN OUNCES	HEIGHT IN INCHES	WIDTH IN INCHES	THICKNESS IN INCHES	FINISH
A-3144	3/4 DR.	1-1/8	1/2	1-23/32	1-17/64	7/16	#1 CORK
A-3778	1 DR.	1-5/8	7/8	2-1/4	1-1/4	1/2	#1 CORK
A-1147	1-1/2 DR.	BASE OF NECK	9/16	2-3/32	1-5/32	5/8	#0 CORK & SLIP-OVER CAP
A-3182	1-1/2 DR.	1-23/32	3/4	2-5/16	31/32	17/32	"
A-3146	1-1/2 DR.	BASE OF NECK	9/16	2-5/16	1	35/64	"
A-3133	1-1/2 DR.	"	1/2	2-23/64	13/16	9/16	"
A-3007	1 oz.	3-15/32	2	4-1/16	1-19/32	23/32	#1 CORK



A-5241



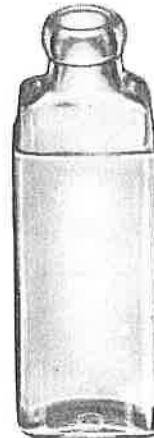
A-3142



A-1236



A-3140



A-3411



A-1452



A-749

MOLD No.	CAPACITY IN OUNCES	IDEAL FILLING POINT	WEIGHT IN OUNCES	HEIGHT IN INCHES	WIDTH IN INCHES	THICKNESS IN INCHES	FINISH
A-5241	1-1/10 DR.	1-29/32	5/8	2-15/64	63/64	1/2	CORK
A-1236	1-1/2 DR.	1-3/4	13/16	2-11/32	15/16	39/64	#0 CORK & SLIP-OVER CAP
A-3411	1-1/2 DR.	1-3/4	9/16	2-11/32	35/64	53/64	"
A-3140	1-1/2 DR.	BASE OF NECK	13/16	2-1/8	1-21/64	1/2	"
A-3142	1-1/2 DR.	"	9/16	2-25/64	63/64	1/2	"
A-749	1-1/2 DR.	"	7/8	1-15/16	1-15/32	23/32	SP. SC. CAP
A-1452	1/4 oz.	1-5/16	3/4	2	1-1/16	49/64	"

PURSE PERFUME





A-708



A-745



A-730
A-737



A-1144



A-1121
A-1119
A-1120

CANTER PERFUMES



MOLD No.	CAPACITY IN OUNCES	IDEAL FILLING POINT	WEIGHT IN OUNCES	HEIGHT IN INCHES	WIDTH IN INCHES	THICKNESS IN INCHES	FINISH
A-1119	1/2	1-1/8	1-1/2	1-21/32	1-55/64 DIAM.		#2 SHELL CORK
A-730	1/2	1-1/4	1-1/2	1-1/2	1-31/32	"	"
A-708	6 DR.	BASE OF NECK	1-1/2	1-41/64	2-3/64	"	"
A-745	3/4	"	2-1/8	1-53/64	2	"	"
A-1144	1	"	2-1/4	1-15/16	2-3/16	2-3/16	"
A-737	1	1-3/8	2-1/2	1-7/8	2-17/64 DIAM.		"
A-1120	1	1-5/16	2-3/8	1-59/64	2-3/16	"	"
A-1121	2	1-1/2	3	2-1/8	2-39/64	"	#3 SHELL CORK



A-1304



A-746



A-1127



A-775

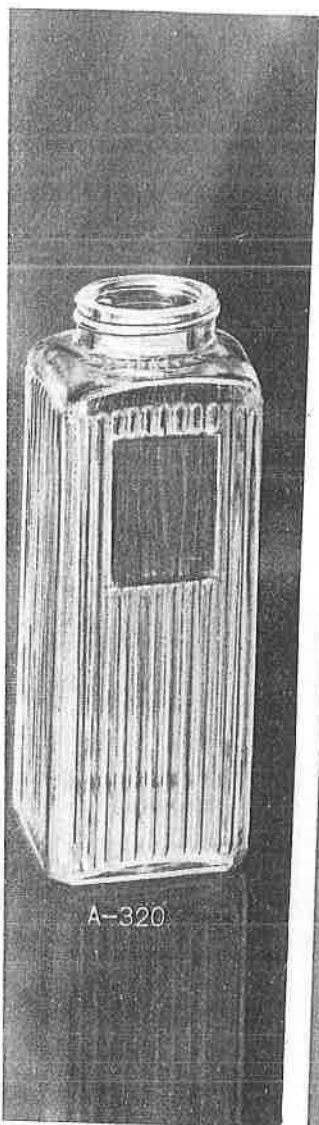


A-725

MOLD No.	CAPACITY IN OUNCES	IDEAL FILLING POINT	WEIGHT IN OUNCES	HEIGHT IN INCHES	WIDTH IN INCHES	THICKNESS IN INCHES	FINISH
A-725	1/2	BASE OF NECK	1-1/2	1-29/32	2-3/16	47/64	#2 CORK
A-1304	6 DR.	1-13/32	2	2-1/8	1-55/64 DIAM.		#2 SHELL CORK
A-746	3/4	BASE OF NECK	2	1-27/32	1-27/32	1-27/32	"
A-1127	1	1-7/32	2	1-3/4	2-17/64 DIAM.		"
A-775	1	1-7/16	2-1/4	2-5/16	1-63/64 DIAM.		#2 CORK

DECANTER
PERFUMES





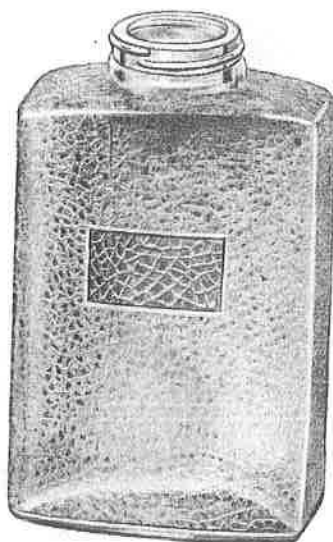
A-320



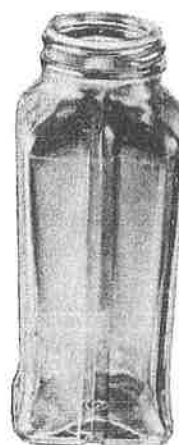
A-5524
A-5525



A-1116



A-2627



A-359

BATH SALTS



MOLD No.	CAPACITY IN OUNCES	IDEAL FILLING POINT	WEIGHT IN OUNCES	HEIGHT IN INCHES	WIDTH IN INCHES	THICKNESS IN INCHES	FINISH
A-1116	6	4-1/2	7	5-1/16	2-29/32	1-13/16	38-400
A-5524-IS	6-11/16	3-47/64	7-7/16	4-7/16	3-9/32	1-41/64	38-400
A-359	8	4-7/16	8-3/8	4-9/16	1-11/32	1-11/32	45-400
A-5525-IS	12	4-11/32	10-1/2	5-1/16	3-55/64	2-7/64	38-400
A-320	15	6-1/8	11-1/2	6-9/16	2-1/2 DIAM.		45-400
A-2627	18	6	18	6-19/32	3-31/32	2-11/32	45-400