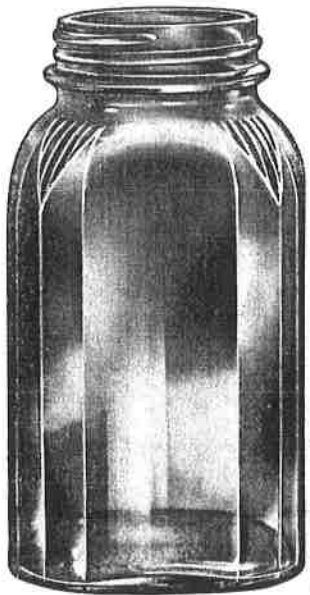


C-1299

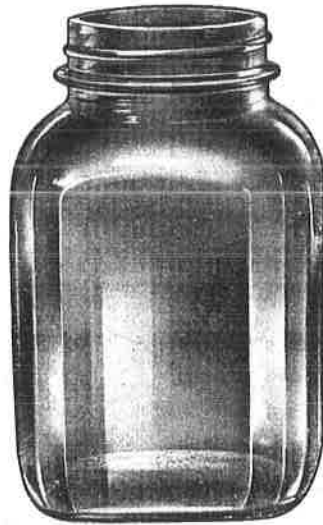
Mold No.	Fluid Oz. Bot. Fin.	Capacity Overflow	Weight in Ounces	Height in Inches	Width in Inches	Thick-ness in Inches	Finish	Dozens Per Carton	Lbs. Per Carton
C-1289	7½	8¼	8	4⅝	2⅓ ₁₆	2 ⁵ / ₁₆	58-400	2	15
C-1232	11⅜	12⅛	10½	6	3 ⁷ / ₃₂	2 ⁷ / ₆₄	58-400	2	19
C-1241	14¼	15¼	12	6	3½	2 ⁹ / ₃₂	63-400	2	21
C-1299	15⅝	16⅝	12¾	6 ¹⁷ / ₆₄	3 ⁷ / ₃₂	2 ⁹ / ₃₂	63-400	2	23
C-1265	23	25	16	7 ¹³ / ₆₄	3 ⁷ / ₈	2 ³¹ / ₃₂	70-1525 G-450	1	18
C-1242	28¼	30¼	19	8 ¹ / ₁₆	4 ¹⁵ / ₁₆	3 ³ / ₃₂	G-451	1	16½
C-1300	30⅝	32⅝	20	8 ³ / ₆₄	4 ⁵ / ₁₆	3 ¹ / ₃₂	G-451	1	20

TU-VUE JARS

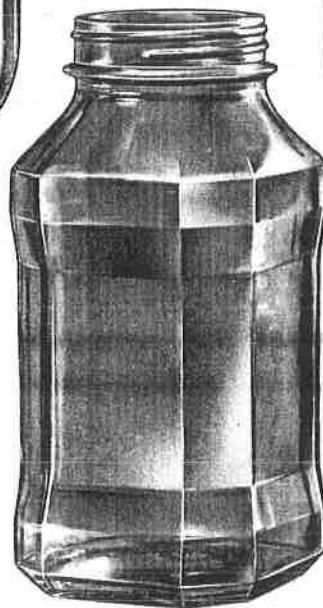




C-1272



C-1293
C-1245



C-1031



C-1323

COFFEE JARS



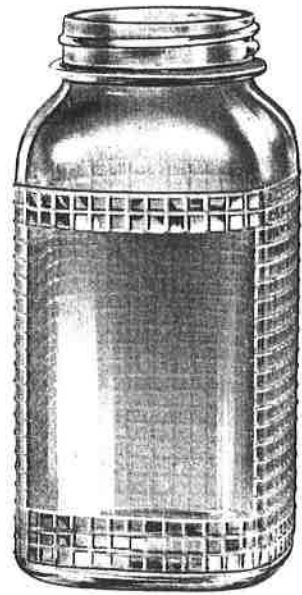
Mold No.	Fluid Oz. Bot. Fin.	Capacity Overflow	Weight in Ounces	Height in Inches	Diameter in Inches	Finish	Dozens Per Carton	Lbs. Per Carton
C-1293	37	39	18½	6⅞	4⅝	G-451	1	20
C-1323	37¼	39¼	18½	6⅞	4⅜	G-451	1	20
C-1272	38	40	23	7½	3⅝	G-451	1	20
C-1031	38	40	23¼	8⅜	3⅝	G-451	1	20
C-1245	76	78	38	8½	5⅝	G-451	1	24



C-1327



C-1331



C-1142

Mold No.	Fluid Oz. Bot.	Capacity Fin.—Overflow	Weight in Ounces	Height in Inches	Width in Inches	Thick-ness in Inches	Finish	Dozens Per Carton	Lbs. Per Carton
C-1142 (Stock)	39 $\frac{1}{8}$	40	23	7 $\frac{5}{64}$	3 $\frac{5}{64}$	3 $\frac{13}{16}$	G-451	1	20
C-1327 (Stock)	109	118	52	7 $\frac{23}{64}$	7 $\frac{5}{16}$	Diam.	K-450	$\frac{1}{2}$	21
C-1331	110	118	50	8 $\frac{1}{32}$	6 $\frac{1}{4}$	Diam.	K-450	$\frac{1}{2}$	21

COFFEE JARS

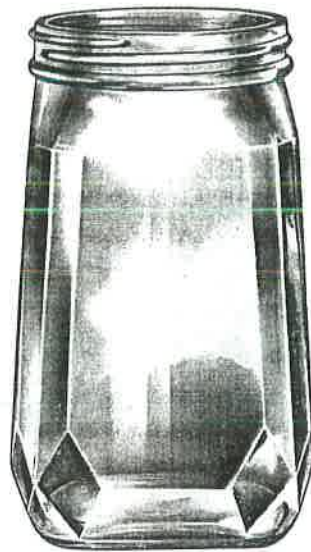




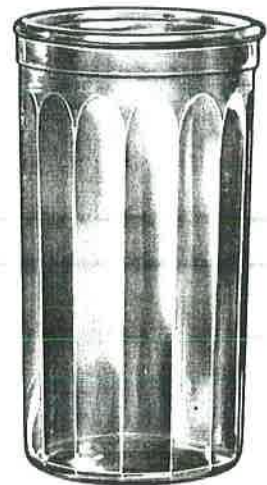
C-1187
C-1190



C-1279



C-1238



C-1167

**SHAKER
WIDE MOUTH
JARS**

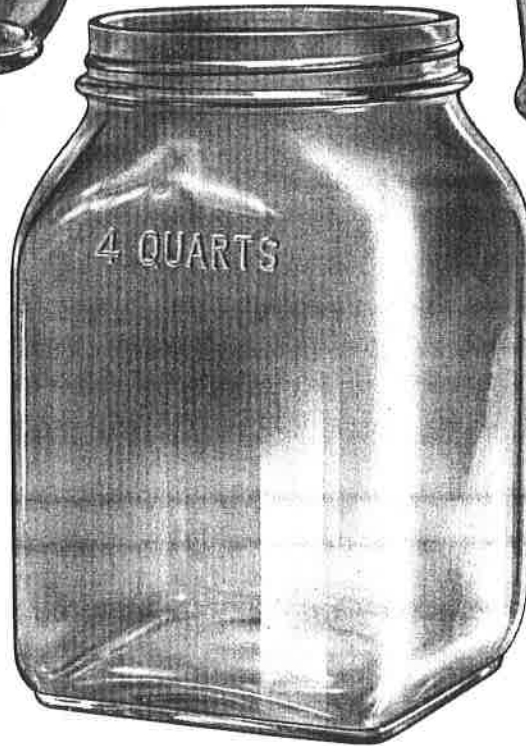
Mold No.	Fluid Oz. Bot.	Capacity Fin.—Overflow	Weight in Ounces	Height in Inches	Width in Inches	Thick-ness in Inches	Finish	Dozens Per Carton	Lbs. Per Carton
C-1167	14	16	13	5 ⁷ / ₈	3	Diam.	80-1850	1	12
C-1279	15 ⁵ / ₈	16 ³ / ₈	13 ¹ / ₂	6 ⁴ / ₃₂	3 ¹⁵ / ₃₂	2 ¹³ / ₃₂	63-1550	1	11 ¹ / ₂
C-1190	16 ³ / ₄	17 ³ / ₈	13	7 ¹⁵ / ₃₂	2 ¹⁵ / ₁₆	Diam.	48-1700	1	12
C-1187	26 ³ / ₄	27 ³ / ₈	17	8 ⁵ / ₈	3 ¹¹ / ₃₂	Diam.	48-1700	1	15
C-1238	30 ⁷ / ₈	32 ⁷ / ₈	18 ¹ / ₂	6 ¹⁹ / ₃₂	3 ²⁵ / ₃₂	Diam.	83-400	1	17



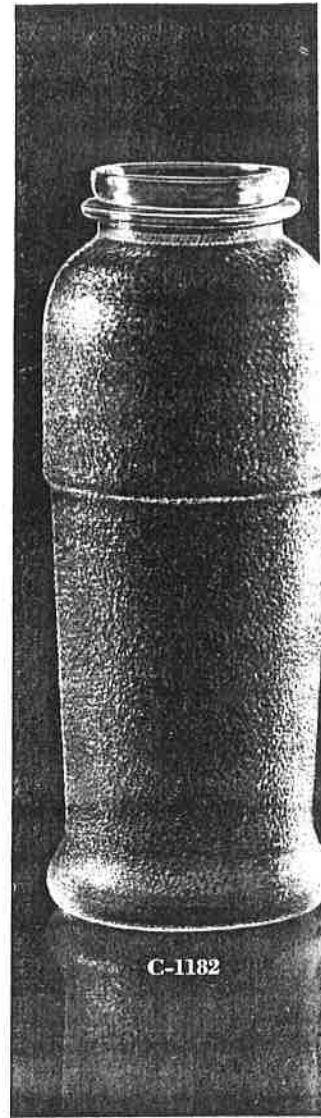
C-1186



C-1174



C-1214



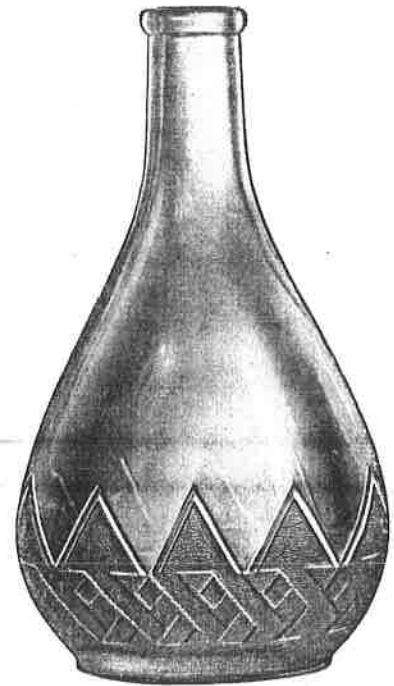
C-1182

Mold No.	Fluid Oz. Bot. Fin.—Overflow	Capacity	Weight in Ounces	Height in Inches	Width in Inches	Thick-ness in Inches	Finish	Dozens Per Carton	Lbs. Per Carton
C-1186	7	8	8	3 ³ / ₄	3 ³ / ₆₄	2 ¹³ / ₁₆	58-1700	2	12
C-1174	8	8 ⁵ / ₈	8	3 ³¹ / ₃₂	3 ⁷ / ₆₄	Diam.	53-400	2	15
C-1182	27 ¹ / ₂	28 ¹ / ₂	17	8 ⁵ / ₈	3 ²⁷ / ₆₄	Diam.	58-1700	1	17
C-1214	120	129	59	9 ⁷ / ₃₂	5 ²⁵ / ₃₂	Diam.	OIG-131	1	47

**SHAKER
MUSTARDS
DISPLAY JAR**



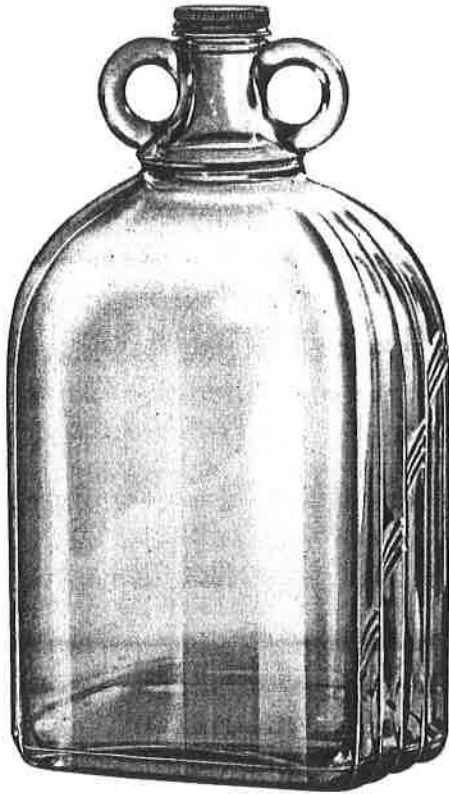
E-677



E-736

**WASHINGTON
FLASK
DECANTER**

Mold No.	Fluid Ounce Capacity	Weight in Ounces	Filling Pt. Fr. Base	Height in Inches	Width in Inches	Thickness in Inches	Finish	Dozens Per Carton	Lbs. Per Carton
E-677	32	22	6 ¹⁵ / ₆₄	7 ¹³ / ₁₆	5 ³⁹ / ₆₄	3 ¹³ / ₃₂	38-400	1	19 ¹ / ₂
E-736	32	24	6 ¹⁵ / ₁₆	9 ⁴³ / ₆₄	5 ³ / ₈	3 ⁵ / ₈	Cork	1	21



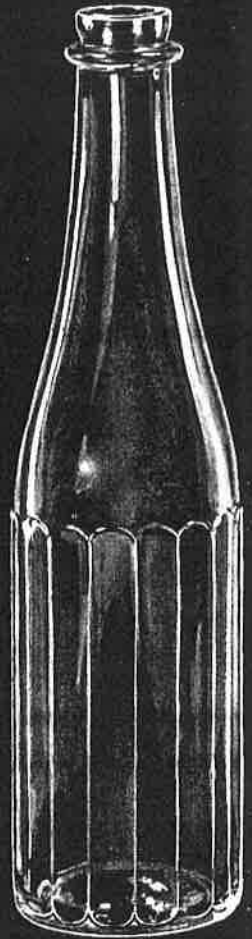
E-692



E-691
E-690



E-685



E-748

Mold No.	Fluid Ounce Cap.	Weight in Ounces	Filling Pt. fr. Base	Height in Inches	Width in Inches	Thick-ness in Inches	Finish	Dozens per Carton	Lbs. per Carton
E-691	7	8 $\frac{1}{4}$	7 $\frac{1}{32}$	7 $\frac{31}{32}$	2 $\frac{7}{64}$	Diam.	26-275	2	15
E-685	12 $\frac{3}{8}$	13	Parting Line	9 $\frac{5}{8}$	2 $\frac{1}{2}$	Diam.	26-250 26-275	2	23
E-690	12 $\frac{3}{8}$	13	Parting Line	9 $\frac{5}{8}$	2 $\frac{9}{16}$	Diam.	26-275	2	23
E-748	12 $\frac{3}{8}$	13	9 $\frac{7}{64}$	9 $\frac{3}{4}$	2 $\frac{33}{64}$	Diam.	27-1700	2	22 $\frac{1}{2}$
E-692 (Stock)	128	58	8 $\frac{15}{16}$	11 $\frac{1}{2}$	7 $\frac{7}{32}$	5 $\frac{1}{32}$	38-400 Glass Handle	$\frac{1}{2}$	28

**CATSUPS
MODERNISTIC
GALLON**





OWENS - ILLINOIS GLASS COMPANY

**LARGE WARE
DIVISION**

••

WATERS

CONDIMENTS

FRUIT JUICES

POWDERED CHEMICALS

ACIDS

••

DISPLAY PURPOSES



WHILE affording material for the best all around container which man has been able to devise, glass does not betray nature in that it allows perfect vision of its contents. All the enticement that there is in natural food coloring is visible—all the sparkle and clarity of pure water is apparent. Glass in the form of large bottles makes a most convincing and attractive display.

Selling In A Large Way

THE great machine that automatically brings large bottles to life dwarfs other ponderous bottle blowing mechanism. There is only one such in existence so that from no other source can be obtained large bottles of like perfection.

Imagine an arm of metal, capable of holding a large bottle mold weighing several hundred pounds, reaching into a huge furnace and extracting enough glass to form the walls and bottom of a big bottle. Then picture six of them steadily rotating, each picking up its charge of molten glass and in almost no time, depositing large bottles of a degree of perfection undreamed of a few years ago.

Anything very large or exceedingly small exerts an unusual pull upon the imagination of the average person. Large bottles therefore, being out of the ordinary themselves, command attention and are ideal for display purposes.

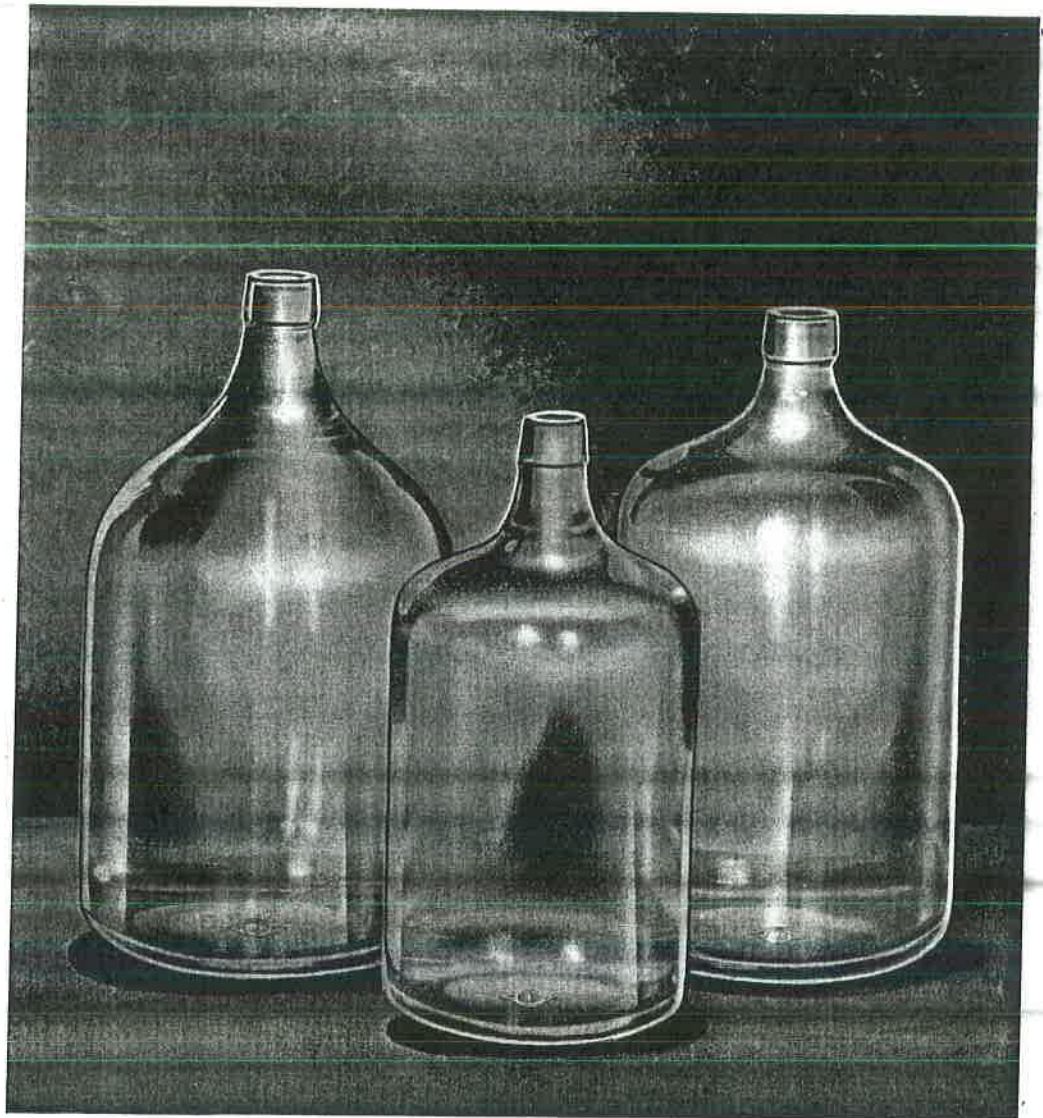
More recently large bottles have come into use for the preservation of foods and their display. Pickles, olives, meats in brine, fruit and vegetable pulp and even fruit itself find their way into large bottles. For many uses they are convenient and attractive because of their size. Their greatest advantages however are the two basic reasons for glass superiority—acid resisting qualities and transparency.

Hundreds of thousands of them are used for the transportation and dispensing of spring and mineral waters and great numbers fill the need for shipping and storing acids of commerce.

When molded into big bottles, speaking in the vernacular of the day, glass is still the ideal container—in a large way.



AT-24



**WATER
BOTTLES**
(STOCK)

Mold No.	Fluid Cap.	Weight in Lbs.	Filling Point fr. Base	Height in Inches	Diameter in Inches	Finish	Dozens Per Crate	Lbs. Per Crate
AT-24	2 gal.	7	11 ¹⁵ / ₁₆	16	7 ⁴⁵ / ₆₄	# 14 Cork	1 ¹ / ₂	162
AT-25	3 gal.	8 ³ / ₄	12 ¹³ / ₁₆	17	8 ³¹ / ₃₂	# 14 Cork	1	135
AT-1	5 gal.	12	15 ³ / ₈	19 ³ / ₈	10 ⁵ / ₈	# 16 Cork	1 ¹ / ₂	110
AT-7 (Long Neck)	42 pint	12	14 ³ / ₄	20 ⁵ / ₁₆	11 ¹ / ₈	# 16 Cork	1 ¹ / ₂	110



FUEL OIL BOTTLES

Mold No.	Fluid Capacity	Weight in Lbs.	Filling Pt. fr. Base	Height in Inches	Diam. in Inches	Finish	Unit per Carton	Lbs. per Carton
AT-24(Stock)	2 gal.	7	11 $\frac{3}{4}$	15 $\frac{31}{32}$	7 $\frac{45}{64}$	OIG-112	1	8
AT-25(Stock)	3 gal.	8 $\frac{3}{4}$	13	17 $\frac{7}{32}$	8 $\frac{31}{32}$	OIG-112	1	10
AT-206	3 gal.	8 $\frac{3}{4}$	16 $\frac{5}{8}$	20 $\frac{1}{2}$	7 $\frac{27}{32}$	OIG-112	1	10



**SANITARY
GLASS CROCK**
HANDY MIXER
(STOCK)

Mold No.	Fluid Capacity	Weight in Lbs.	Filling Pt. fr. Base	Height in Inches	Diam. in Inches	Finish	Unit per Carton	Lbs. per Carton
AT-190	2 1/4 gal.	7 1/2	13 11/16	16 1/2	7 3/4	48-400	1	8
AT-200	5 gal.	17	10 3/4	15 1/2	12 5/16	Wide Mouth for Glass Lid	1	20

Glass lids (Mold B-511) are available for the Sanitary Glass Crocks. With such a cover the crock is an ideal giant display jar.

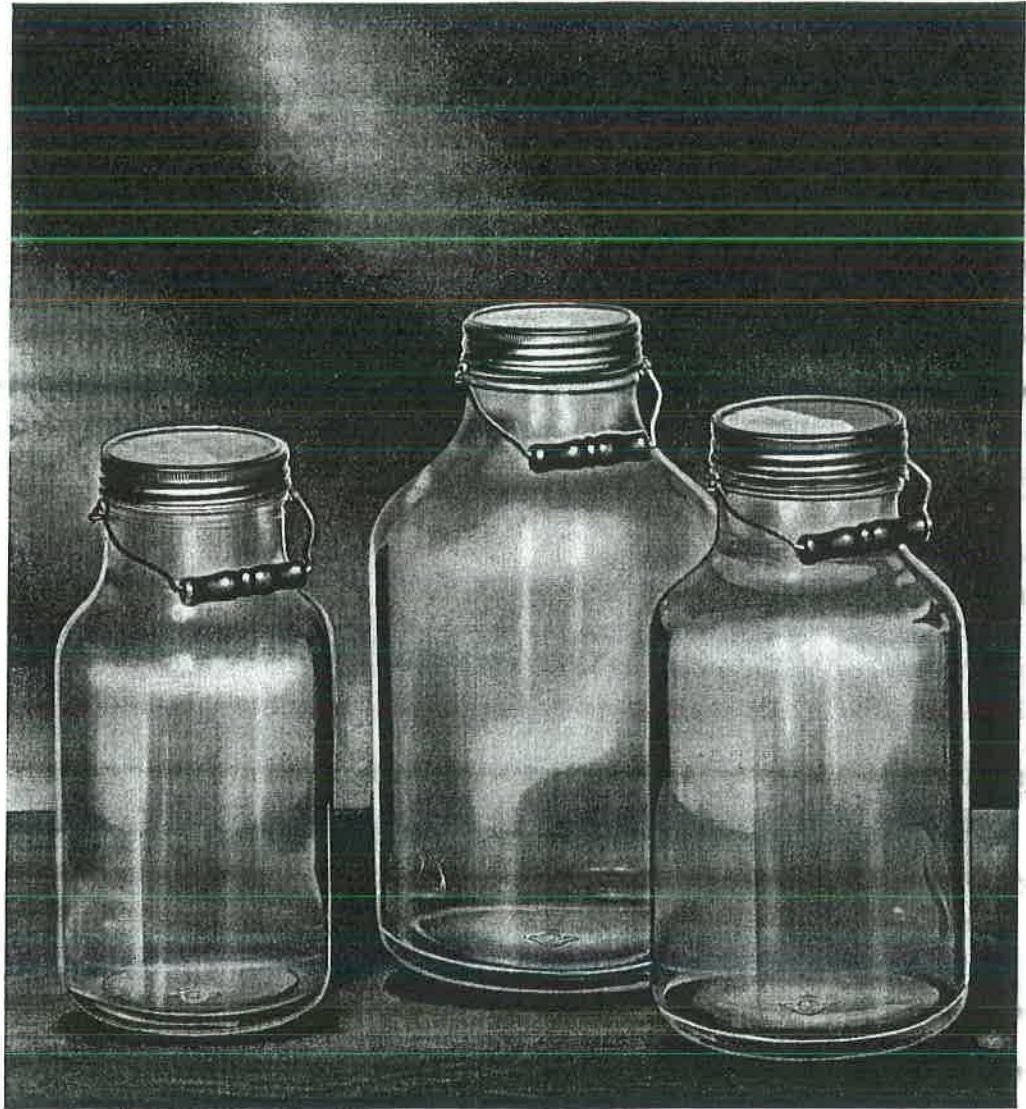
The Handy Mixers are supplied with black metal caps attached.



AT-32

Mold No.	Fluid Cap.	Weight in Lbs.	Filling Point fr. Base	Height in Inches	Diameter in Inches	Finish	Dozens Per Crate	Lbs. Per Crate
AT-32	2 gal.	7	11 ³ / ₄	15 ¹ / ₈	7 ⁹ / ₁₆	3 ¹ / ₄ " Cork	1 ¹ / ₂	160
AT-3	3 gal.	8 ³ / ₄	12 ⁵ / ₈	16	8 ⁷ / ₈	"	1	135
AT-60	5 gal.	12 ¹ / ₂	14 ³ / ₄	17 ³ / ₄	10 ⁵ / ₈	"	1/2	110
AT-136 (Narrow Mouth)	5 gal.	13 ¹ / ₄	12 ¹ / ₈	16 ⁵ / ₈	12 ³ / ₄	#13 Cork	1/2	115

**GRAPE JUICE
WIDE
MOUTH
CONTAINERS**



**WIDE
MOUTH
BUCKETS**
(STOCK)

Mold No.	Fluid Cap.	Weight in Lbs.	Filling Point fr. Base	Height in Inches	Diameter in Inches	Finish	Dozen Per Crate	Lbs. Per Crate
AT-102	2 gal.	7	11 $\frac{3}{8}$	16	7 $\frac{5}{8}$	132 m.m. Screw Cap	1 $\frac{1}{2}$	160
AT-103	3 gal.	9	13 $\frac{7}{16}$	17	8 $\frac{13}{16}$	"	1	137
AT-62	5 gal.	14	17	18 $\frac{7}{8}$	10 $\frac{5}{8}$	"	$\frac{1}{2}$	110

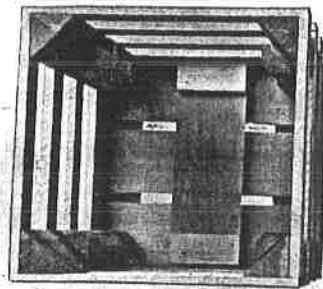
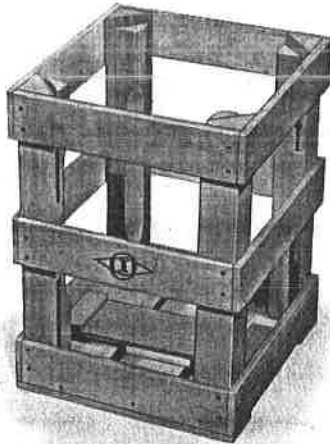


Mold No.	Fluid Cap.	Weight in Lbs.	Filling Point fr. Base	Height in Inches	Diameter in Inches	Finish	Dozen Per Crate	Lbs. Per Crate
AT-154	2½ gal.	9	13½	15⅞	8 ¹⁵ / ₁₆	132 m.m. Screw Cap	1	144
AT-153	3 gal.	9	14¼	16 ⁵ / ₃₂	9 ⁵ / ₁₆	"	1	144
AT-152	5 gal.	14½	18	19 ⁹ / ₁₆	10 ⁷ / ₈	"	½	114

**WIDE
MOUTH
BARRELS**
(STOCK)

Large Ware Crates

"O-I" Crate

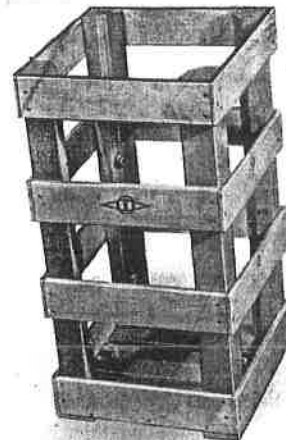
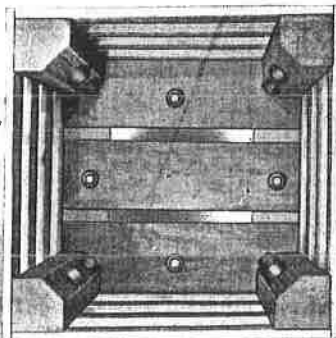


This is an improved, patented crate for shipping large-ware. The bottle is supported on a wooden spring and receives similar protection on all four sides. In each corner is an upright, slotted in such a manner to greatly increase the natural elasticity of the wood, giving it superior qualities to withstand severe shocks. This crate is furnished both shoulder height and full height and can be had either plain or lettered with your firm name and address.

Weights Complete with Bottles

5 Gallon, full height	20 lbs.
5 Gallon, shoulder height	18 lbs.
3 Gallon, full height	16 lbs.
3 Gallon, shoulder height	13 lbs.
2 Gallon, full height	14 lbs.
2 Gallon, shoulder height	12 lbs.

Rubber Bumper Crate



In this crate the bottle is supported and cushioned on the sides by rubber bumpers. These bumpers provide a means of absorbing any shock, thus protecting the bottle and its content. Both full height and shoulder height are furnished and may be had either plain or imprinted. Weights the same as above.

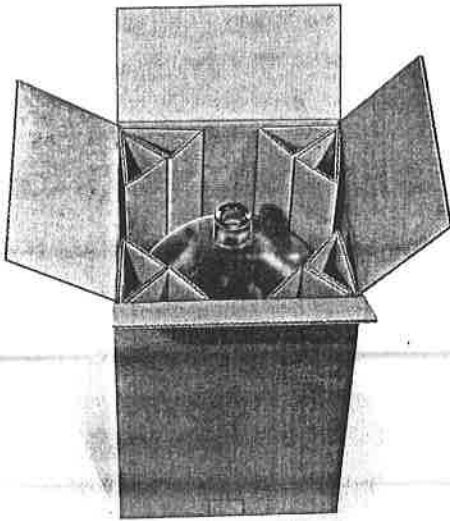
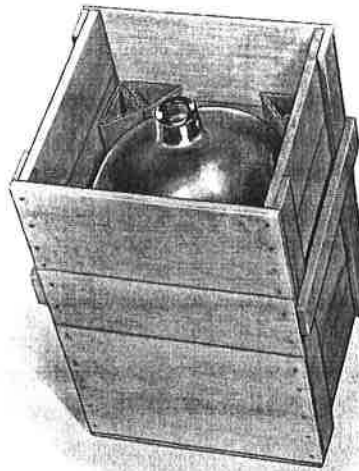
Large Ware Crates

One Trip Box

This package consists of a wooden box with protection afforded the bottle by means of the new corner post feature. These uprights in each corner with their increased thickness of fibreboard, brace the bottle on eight separate sides instead of four. This package assures satisfactory delivery, but does not, however, meet the I.C.C. requirements for shipment of acids or dangerous and inflammable liquids. It is supplied either plain or imprinted.

Weights Complete with Bottle

5 Gallon	27 lbs.
3 Gallon	18 lbs.
2 Gallon	16 lbs.



M. T. Bottle Carton

A reshipping carton of corrugated fibre for empty bottles only, this package also has the new corner post feature. These posts are full height and give added security to the bottle. Jobbers buying stock in these cartons have an ideal reshipping container.

Weights Complete with Bottle

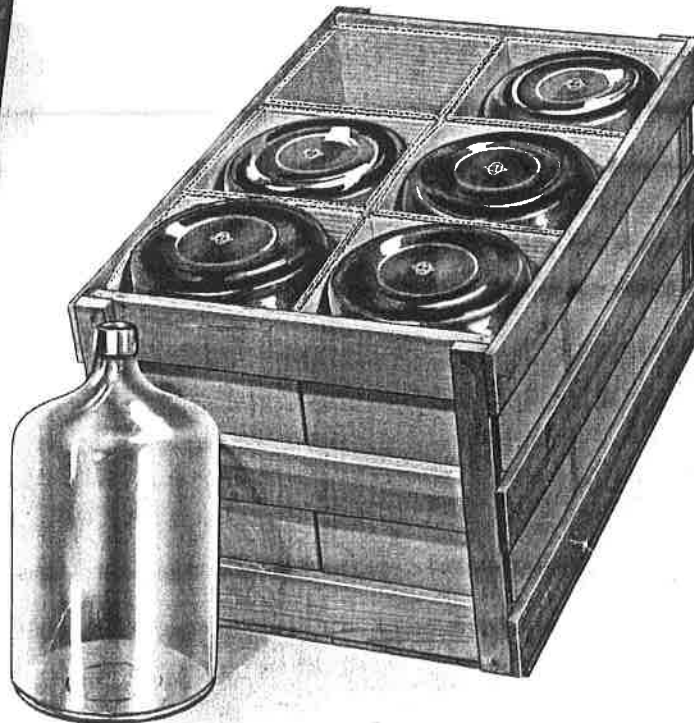
5 Gallon	14 lbs.
3 Gallon	9 lbs.
2 Gallon	8 lbs.

L. C. L. Crate

Bottles crated and enclosed in individual shells are separated from one another by two thicknesses of corrugated paper. This adds considerably to the safety factor and makes a durable package.

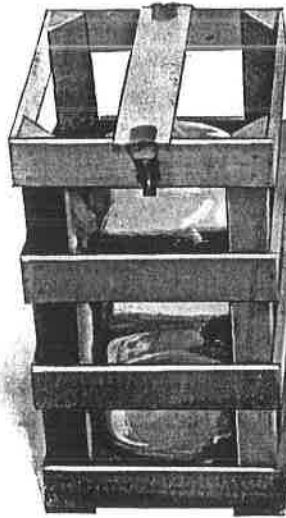
Weights per crate complete with Bottles

5 Gallon— 6 to a crate,	112 lbs.
3 Gallon—12 to a crate,	132 lbs.
2 Gallon—18 to a crate,	162 lbs.

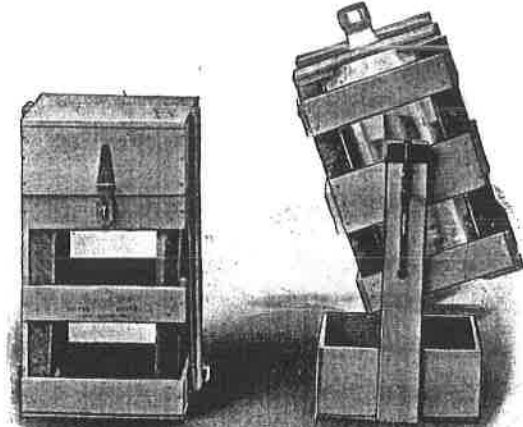


Large Ware Crates

Top Slat, Hinge and Lock



"O-I" Tilter Top Crate

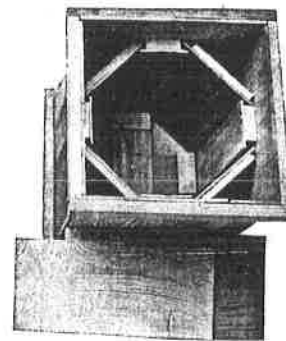
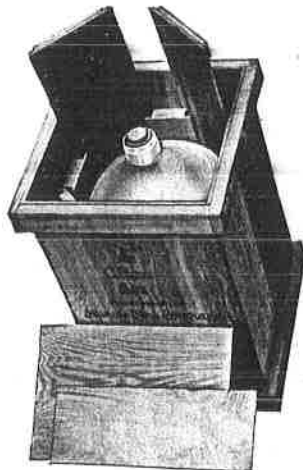


A very excellent package for shipping, storage and dispensing of water, vinegar, oils and numerous other liquids. Designed to secure the advantage of low freight rates, it has the additional quality of being a complete unit with no part of the package to misplace or lose.

See next
This device can be supplied on any of our full height crates. Thus equipped, crates become correct shipping containers and are allowed the lowest freight rate for glass containing liquids.

Weights Complete with Bottle	
5 Gallon	24 lbs.
3 Gallon	19 lbs.
2 Gallon	17 lbs.

Alton Box



This box has a wooden spring in the bottom, supporting the bottle. The four corners have wooden upright springs which protect the bottle in the manner illustrated. This construction is the same as that furnished for acid packages and is suitable for shipment of all commodities except dangerous or inflammable liquids. It is supplied either plain or imprinted.

5 Gallon, weight complete with bottle	30 lbs.
---	---------

Large Ware Crates

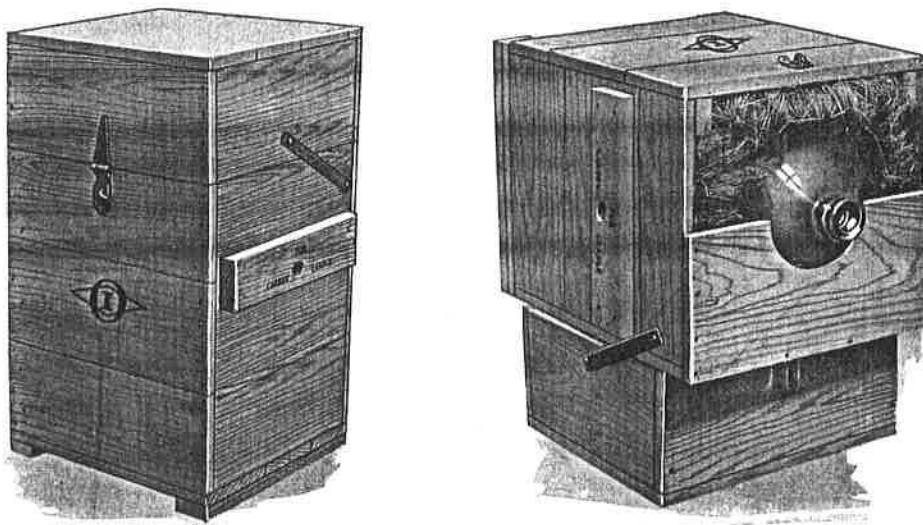
Packages For Acids and Other Dangerous Liquids

According to the regulations issued by the Interstate Commerce Commission known as I.C.C. Specification No. 1-A, all bottles, carboys and outside containers, must meet certain requirements when used for the shipment of inflammable or corrosive liquids. These requirements cover all features of the manufacture of the bottle, the material and construction of the outside box and the means for cushioning the bottle inside the package.

Each complete package is subjected to rigid tests prescribed by the commission. The object of these tests is to prove the ability of the package to withstand shocks equal to those encountered in ordinary transportation.

Our packages for use in shipping acids and dangerous or inflammable liquids comply in all respects with these regulations. The packages shown on this and succeeding pages are the most popular and widely used types in this classification. Other styles can be designed to meet individual requirements. Your inquiry will receive prompt attention.

The Tilter Top Box



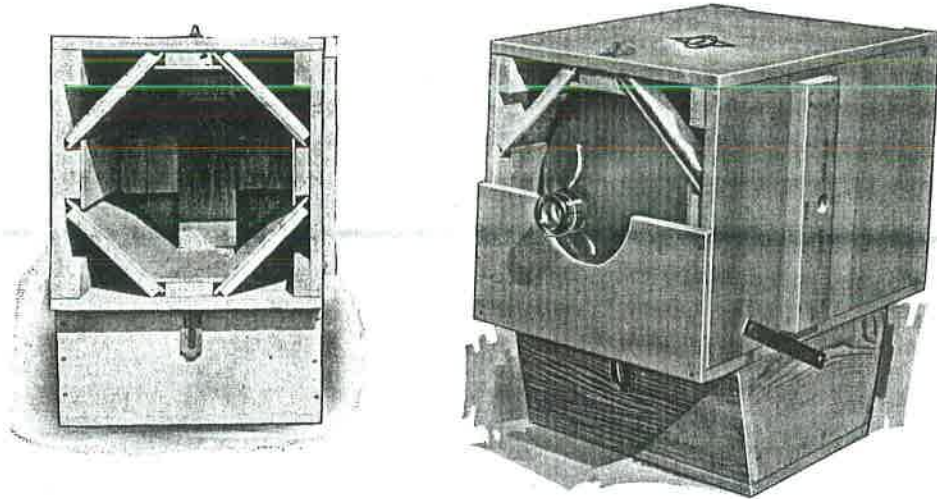
A correct I.C.C. package for the shipment of acids and dangerous or inflammable liquids. The packing material may be either hay or mineral wool.

Weights Complete with Bottle

5 Gallon—Hay packed	45 lbs.
5 Gallon—Mineral wool packed	50 lbs.

Large Ware Crates

"O-I" Tilter Top Box

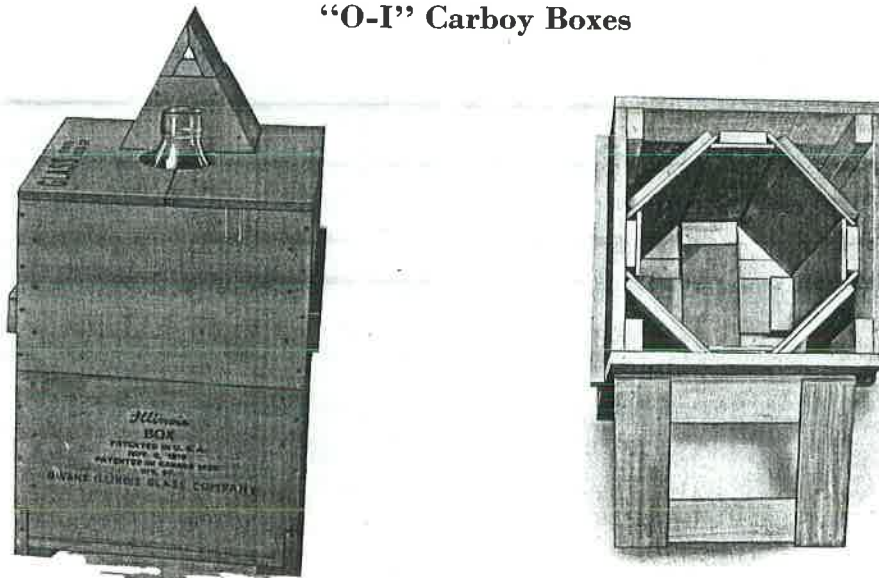


This box is so constructed that the lid can be laid over on one side, thus serving as a platform to tip the package while pouring out its content. It is designed for shipment of liquids that are usually stored in the original package and dispensed in smaller quantities.

A wooden spring at the bottom and wooden uprights in the four corners afford ample protection to the bottle. This package complies with the I.C.C. regulations for shipment of acids and dangerous or inflammable liquids. It is supplied either plain or imprinted.

5 Gallon—Weight complete with bottle 44 lbs.

"O-I" Carboy Boxes



In these boxes inner protection is given the bottle with wood packing similar to the Tilter Top boxes. Both shoulder height and full height are furnished. This package meets the I.C.C. requirements for shipping acids and dangerous or inflammable liquids, except where non-combustible packing is required.

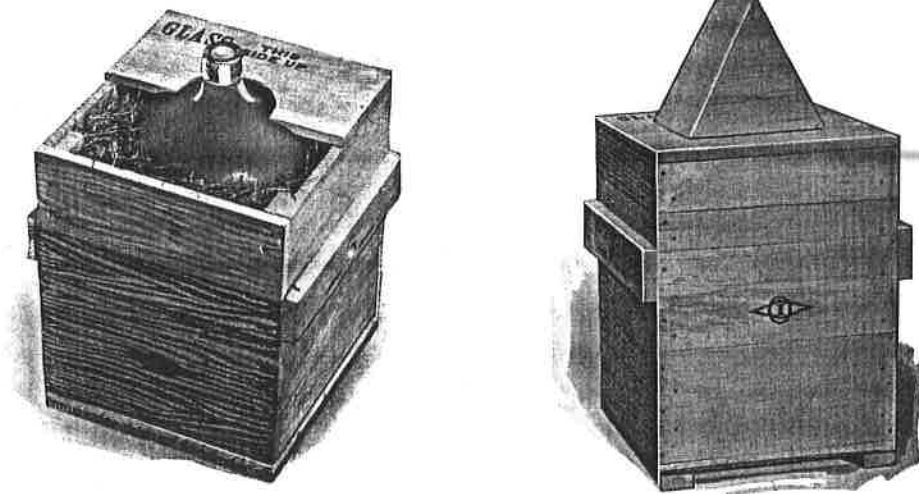
Weights Complete with Bottle

5 Gallon, full height 40 lbs.
5 Gallon, shoulder height 35 lbs.

Large Ware Crates

Regular Carboy Boxes

Shoulder High

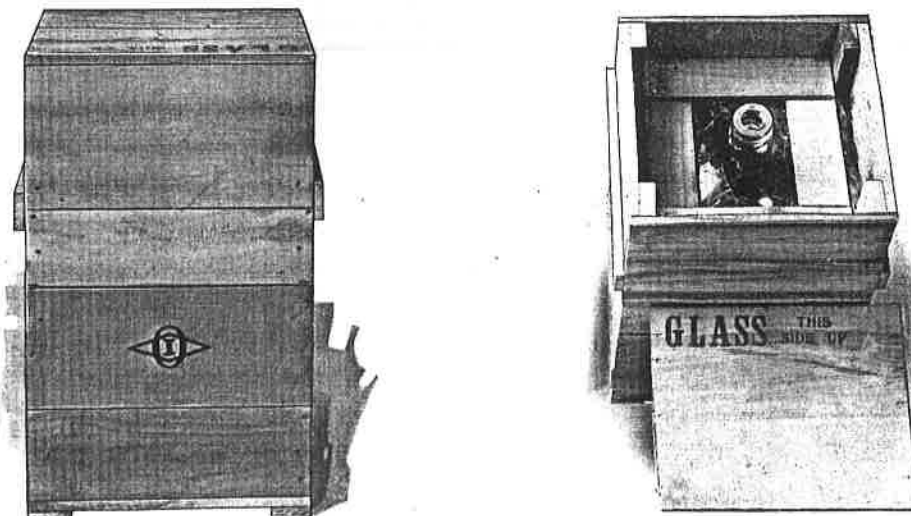


This is the regular height and may be had either with or without the hood.

Weights Complete with Bottle

5 Gallon—Hay packed40 lbs.
5 Gallon—Mineral wool packed45 lbs.

Full Height

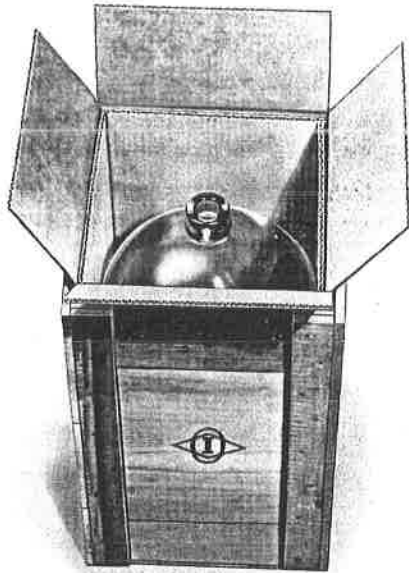


The full height Carboy Box is a standard approved package, the packing being hay or similar material.

Weights Complete with Bottle

5 Gallon—Hay packed45 lbs.
5 Gallon—Mineral wool packed50 lbs.

Large Ware Crates



Ideal Box

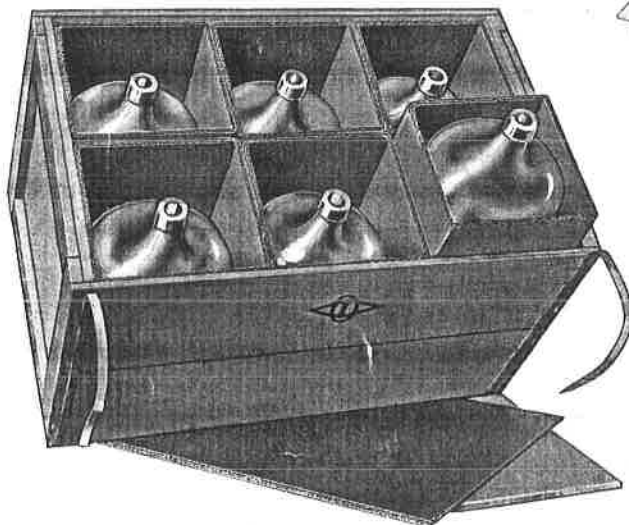
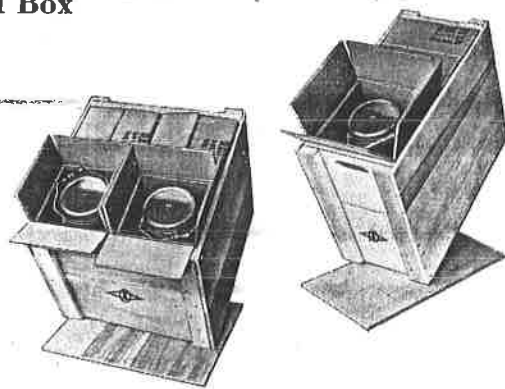
This box is constructed of solid wood with an inner carton of double strength corrugated fibre board. This sturdy combination makes an excellent shipping container for a variety of products, such as acids or drugs in bottles; pickles, fruit and various other foods in glass buckets and barrels.

Weight Complete with Bottles

5 Gallon	26 lbs.
3 Gallon	19 lbs.
2 Gallon	16 lbs.

2 and 4 Bottle Ideal Box

Similar construction as the Ideal single bottle package, these boxes have capacity for 2 or 4 bottles. Individual corrugated inner cartons are provided for each bottle. The use of these packages in shipping 2 or 4 bottles affords a savings in freight rates over the singly packed bottle and are correct for shipping either freight or express.



Export Package

This sturdy package is designed to stand the rough handling encountered in export shipping. Each of the 6 bottles has an individual double faced fibre board shell and is protected at top and bottom by double faced pads. The outer wood box is nailed and doubly cleated with metal strips. The outside dimensions and weights are as follows:

128 lbs. gross, 62 lbs. tare, 66 lbs. net, cubic measurement $36\frac{3}{4}'' \times 23\frac{3}{4}'' \times 24\frac{1}{2}''$.