

Clyde Glass Works

Bill Lockhart, Beau Schriever, Bob Brown, Carol Serr, and Bill Lindsey

with contributions by Tod von Mechow

Glass factories at Clyde, New York, began operation in 1828, but the plant did not evolve to bottle production until 1864. The operating firm reorganized periodically – mostly due to retirements, deaths, and new partners – although there was considerable continuity of ownership. In 1880, the owners incorporated as the Clyde Glass Works. Clyde made soda and beer bottles, liquor flasks, and fruit jars that were marked with one of the Clyde logos. The plant closed in 1915. Although another group reopened the works in 1920, it only survived for two years.

Early Glass Factories, Clyde, New York (1827-1877)

William S. De Zeng and James R. Rees became partners in 1827 and founded a glass house to make cylinder window glass. They laid the cornerstone on March 27, 1828 and the plant became operational that year. Orrin Southwick and Almon Wood (Southwick & Wood) built the first bottle factory in Clyde in 1864.¹ Wood apparently withdrew to be replaced by Charles W. Reed to form the firm of Southwick & Reed – sometime between 1864 and 1868. About 1868, Southwick, Reed & Co. merged the bottle and window glass plants into a single unit, with William C. Ely, Dr. Linue Ely, and Orrin Southwick as principals – later, Charles W. Reed, John Schindler, and George H. Hoyt. The factory burned on July 24, 1873, but it was immediately rebuilt (McKearin & Wilson 1978:173; *National Glass Budget* 1917:5; Roller 1997; Toulouse 1971:137).

In early August of 1919, when workmen were again revamping the factory, they discovered that a bottle filled with papers had been sealed inside it in 1878. A paper, dated August 8, 1878, stated that “the corner stone of the Clyde Window Glass Factory was this day laid second time” and that Thomas C. Ely, Charles W. Reed, and George H. Hoyt were the

¹ Sources are unclear, but Southwick & Reed probably also operated the former de Zeng & Ree plant.

proprietors, with Charles D. Ely as superintendent of transportation. This is a slightly different order of importance than has been listed by other sources. Inside the stone, they also found “a 3-ounce bottle of brandy [probably 13-ounce or 23-ounce], a copy of the Wayne County *Journal* of May 9, 1878, a card dated 1827 [actually 1877], ‘Ely, Reed & Company. Window Glass, Fruit Jars, Bottles etc.’” Also included was a “list dated 1828 [1878] of names of the proprietors of the glass factory, of ten blowers, four cutters, one master, one pot worker, packer and two flatteners” (*Pottery, Glass & Brass Salesman* 1919:9). This indicates that the reorganization that created Ely, Reed & Co. occurred by 1877.

Kreider, Campbell & Co. – sole manufacturers of the Kelly & Samuel’s Keystone Grinding Machine – distributed a leaflet ca. 1876, listing “C. Reed & Co., Clyde, NY” among users of their machine, patented December 1869 – see the Camden Glass Works section for information on this and other machines for grinding the rims or lips of fruit jars (McKearin & Wilson 1978:174; Roller 1997). The installation of the machine may actually have occurred just before August 8, 1878, when Ely, Reed & Co. (Charles W. Reed, George H. Hoyt, William C. Ely, and John Schindler) opened the old cornerstone and laid the new one for the now expanded factory.² In 1880, Reed retired, and the firm became Ely, Son & Hoyt (*National Glass Budget* 1917:5; *Pottery, Glass & Brass Salesman* 1919:9).

Containers and Marks

According to the 1877 card, Southwick, Reed & Co. made fruit jars, and it is highly likely that those were Mason jars. Based on the Mason jars that followed (see below), it seems probable that these were the firm’s earliest fruit jar attempts.

S&R (ca. 1865-1868)

Creswick (1987a:138) noted a jar embossed “MASON’S (slight arch) / PATENT / NOV 30TH / 1858 (all horizontal)” on the front, with “S&R” on the base – although she did not illustrate the mark. She suggested that a possible maker was “Southwick, Reed & Co., Clyde,

² Other sources, including the *National Glass Budget* (1917:5) placed the date at August 10. The paper from the cornerstone, however, was almost surely correct.

New York (Clyde Glass Works) c. 1868.” According to McKearin & Wilson (1978:174), “a short time later [i.e., after 1864] the firm became known as Southwick & Reed.” This company preceded Southwick, Reed & Co., so the probable date range for the jars would be ca. 1865-1868.



Figure 1 – S&R, SR&Co comparison (eBay & Sarah D.)

Sarah D. sent us a photo of the same type of Mason jar described by Creswick, along with the “S&R” logo on the base (Figures 1 & 2). Lockhart’s reply to her analyzed the mark:

Your photo supports Creswick’s suggestion. While each S is not quite identical (the one in SR&Co is cocked slightly to the right), both are obviously the same font, with almost circular curves in the top and bottom of the S. Each R has the same slightly curved right leg, and the ampersand is identical. This use of identical fonts suggests the same mold maker for each jar. That, coupled by the initials matching the Southwick & Reed name, makes the Southwick & Reed identification virtually certain.

SR&Co (1868-ca. 1870)

Another virtually identical shoulder-seal jar was also embossed “MASON’S (slight arch) / PATENT / NOV 30TH / 1858 (all horizontal)” with “SR&Co / 2” on a post-bottom base that was offered on eBay (see Figures 1 & 2). The “C” had a distinct serif at the top termination. Creswick (1987a:138) noted the jar and suggested Southwick, Reed & Co. as the manufacturer ca. 1868. Also see S&R above.

MASON’S PATENT, CLYDE, N.Y. (ca. 1870-ca. 1874)

Creswick (1987a:140) illustrated a mouth-blown, shoulder-seal jar embossed “MASON’S (slight arch) / PATENT / NOV 30TH / 1858 (all horizontal)” with “CLYDE, N.Y.” on the lower reverse side of the



Figure 2 – Mason’s Patent jar (eBay)

jar (Figure 3). Roller (2011:351) only gave this variation a bare mention, and we could not find the jar referenced in other sources. The container should have been produced during the same 1870-1882 period as the one addressed below – although it was probably only made during the early part of that period – possibly ca. 1870-ca. 1874.



Figure 3 – Mason's Patent – CFJCo monogram & Clyde, N.Y. (Creswick 1937a:140; North American Glass)

Since the earlier two jars (S&R and SR&Co) were both Mason's Patent jars, this was logically next in sequence, followed by the Mason's Improved discussed below. An example from North American Glass had the same front and back embossing shown by Creswick (see Figure 3), a base embossed "H82," and a metal lid stamped with the CFJCo monogram of the Consolidated Fruit Jar Co. (Figure 4). Since later jars were embossed with the monogram, this lid probably was the correct one for the jar – although *any* lid on a historical jar could have been replaced by a historical user, an antique dealer, or a collector.

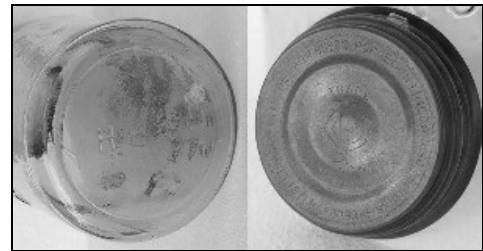


Figure 4 – Lid with CFJCo monogram (North American Glass) & Mason's base (North American Glass)

MASON'S IMPROVED, CLYDE N.Y. (ca. 1874-1882)

Creswick (1937a:122) illustrated a shoulder-seal jar embossed on the front with "MASON'S (slight arch) / CFJCo monogram / IMPROVED (both horizontal)." The reverse heel was embossed "CLYDE, N.Y." (Figure 5). She noted that quart jars were found in amber, aqua, cobalt blue, and colorless examples, but the pint size was only found in aqua. She identified the Clyde Glass Works as the manufacturer for the Consolidated Fruit Jar Co. She did not assign a date range.

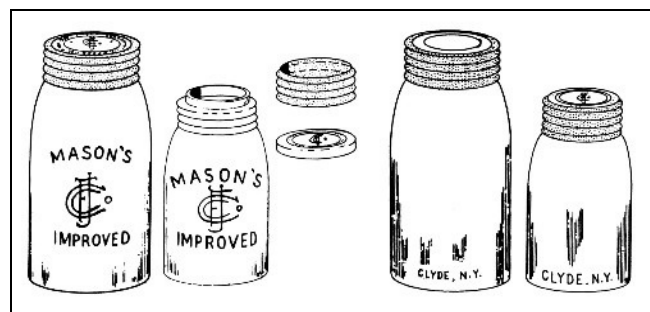


Figure 5 – Mason's Improved – CFJCo monogram & Clyde, N.Y. (Creswick 1937a:122)

According to Toulouse (1971:137),

shortly after [1868] Clyde must have gained a franchise from the Consolidated Fruit Jar Co., since there were many fruit jars bearing the “CFJCo” monogram, with “CLYDE, N.Y.” somewhere on the jar—front or back made no difference. When Consolidated apparently sold its fruit-jar interests to Hero about 1882, Clyde lost a major portion of its business.³

The only jar photos we have seen had the same front embossing as noted by Creswick, with “CLYDE, N.Y.” well above the reverse heel, near the center of the jar (Figure 6). The jar had a ground rim and CFJCo monogram on the glass insert (Figure 7). One base on an eBay auction was embossed “J86,” with “J189” in a double stamp on another (see Figure 7).⁴

Toulouse (1971:137) dated the “CLYDE, N.Y.” mark ca. 1870 to 1882. Assuming that the Toulouse logic is correct,



Figure 6 – Mason’s Improved (North American Glass)



Figure 7 – Ground rim, lid, & basemark (eBay; North American Glass)

the bulk of these jars would have been made by Southwick, Reed & Co. (1870-1877), followed by Ely, Reed & Co. (1877-1880), and into the Ely, Son & Hoyt era between 1880 and 1882. Of course, we have no way to determine which individual firm made any specific jar.

³ Toulouse (1971:137) was the only source to mention front embossing for “CLYDE, N.Y.” This was probably a misunderstanding of reports from collectors in hand-written letters – the major correspondence medium of the time.

⁴ This is by far the earliest documented example of a double-stamp base. Our earliest finding prior to this study was a beer bottle made by the Adolphus Busch Glass Co. ca. 1889. Typically, these are found on bottles (and some jars) made between ca. 1895 and 1914. See the section on the American Glass Co. for more information.

Ely, Son & Hoyt, Clyde, New York (1880-1895)

Charles Reed retired in 1880, and the firm became Ely, Son & Hoyt. This company bought molds from Charles Yockel of Philadelphia and advertised “Window Glass, Fruit Jars and Bottles” on its letterhead.⁵ The stationery was printed with “188_____” as a partial date, but the only letter we have found was incomplete and undated beyond the

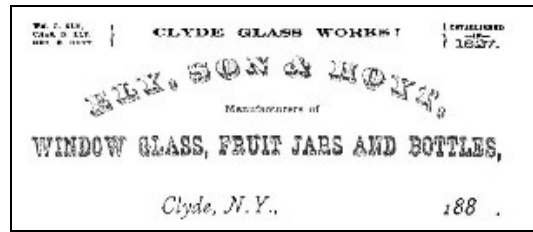


Figure 8 – Ely, Son & Hoyt letterhead (Tyson 1971:11)

printing (Figure 8). The letterhead noted the date of the factory’s origin as 1827. This letterhead is also the first evidence we have for the use of Clyde Glass Works as the name of the plant (Tyson 1971:11). All secondary sources only mentioned the names of the operating firms. Upon the death of William C. Ely in September 1886, another son joined the firm, and the new name became William C. Ely’s Sons & Hoyt. But, reorganization was again in the wind in 1895 (Roller 1997). See Table 1 for a list of Factory operators.

Table 1 – Operators of the Bottle Factory at Clyde, New York

Date	Operating Firm
ca. 1865	Southwick & Reed
1868	Southwick, Reed & Co.
1878	Ely, Reed & Co.
1880	Ely, Sons & Hoyt
1886	William C. Ely’s Sons & Hoyt
1895	Clyde Glass Works (Inc.)

⁵ Toulouse (1971:137) stated that Southwick, Reed & Co. took control of both plants in 1868 and used them both for bottle manufacture. If this is correct, Ely, Reed & Co. must have reinstated window glass production.

Containers and Marks

According to von Mechow (2014), the two firms – Ely, Son & Hoyt and Ely, Sons & Hoyt – used two sets of marks.

ELY SON & HOYT (1880-1886)

Von Mechow (2014) illustrated “ELY SON & HOYT (arch) / CLYDE / N.Y. (both horizontal)” as being used by Ely, Son & Hoyt on the bases of bottles. However, in his individual bottle records, von Mechow noted four close variants, but none exactly matched his original format:

1. E SON & HOYT (arch) / CLYDE N.Y. (inverted arch) – 3 beer bottles
2. E SON & H (arch) / CLYDE (horizontal) / N.Y. (inverted arch) – 1 beer bottle
3. E SON & H (arch) – 1 beer bottle
4. E SON & H (horizontal) – 7 beer bottles

Whitten (2014) noted the mark as “E. SON & H.” and attributed it to both the “Son” and “Sons” firms. Internet searches have only turned

up two examples of the “E SON & H” logo, both embossed horizontally across bottle bases – with no punctuation. One was on an otherwise unembossed amber export beer bottle with an applied two-part finish (Figure 9). The other was on an aqua champagne beer bottle with a one-part finish closed by a Lightning fastener. We have not found examples of the other variations on beer bottles.



Figure 9 – E SON & H logo (Antique Bottles.Net)



Figure 10 – ELY SON & HOYT bases (eBay)

However, we have found examples of “E. SON & H” embossed in an arch on the bases of mouth-blown shoo-fly flasks. The flasks were either very light aqua or amber and had double-ring finishes. So far, we have found no examples of the plural – “SONS.” In our 2024 searches, we also found examples of von Mechow’s

original mark "ELY SON & HOYT (arch) / CLYDE, N.Y. (inverted arch)" on a beer and a soda bottle (Figure 10).

ES&H (1886-1895)

Von Mechow (2014) illustrated this mark as "ES&H (arch) / CLYDE / N.Y. (both horizontal)" on bottle bases. This could have been used by either Ely, Son & Hoyt or Ely, Sons & Hoyt. Von Mechow again noted two variations in his actual listings: 1) ES&H / CLYDE / N.Y. (all horizontal) – 1 soda bottle; and 2) ES&H (horizontal) – 3 Hutchinson soda bottles and 1 beer bottle

Oppelt (2003:12) also noted the ES&H mark on a Hutchinson soda bottle from Wisconsin. He attributed the mark to Ely Sons & Hoyt, Clyde, New York, 1886-1895 but gave no reason for choosing only the later firm. Hutchbook (Fowler 2014) only showed the horizontal mark (E.S.&H.) – with and without punctuation – on 12 Hutchinson bottles. Eight of these were from New York, two from Vermont, one from Georgia, and one with no state noted. Hutchbook did not show any other logo for Ely, Sons & Hoyt. Whitten also listed the E.S.&H. logo (with punctuation) as being used by Ely, Sons & Hoyt. Since the other logo specifically used "SON" – singular – all these sources probably attributed the abbreviated mark to the second "Sons" operating firm. We have followed suit with the same assumption. We only have found examples of "ES&H" mark by itself – on Hutchinson soda bottles (Figure 11).



Figure 11 – ES&H base (eBay)

Clyde Glass Works, Clyde, New York (1895-1915)

On July 10, 1895, *China, Glass & Lamps* reported the incorporation of the company as the Clyde Glass Works with a capital of \$38,000. The directors were Charles D. Ely, George H. Hoyt, Gaylord R. Bacon, James R. Miller, William W. Legg, and George H. Hoyt, Jr., of Clyde, and Frank R. Warren, of Rochester. McKearin & Wilson 1978:174) noted the same incorporators with the addition of George H. Hoyt, Jr. and the misspelling of Legg as Ledd. The new firm ceased production of window glass, although it is unclear whether the group closed the

window plant or continued to use it to make bottles. The factory added a continuous tank for the production of amber bottles at that time (McKearin & Wilson 1978:174; Roller 1997; Toulouse 1971:137). None of the sources called the plant the Clyde Glass Works until the 1895 incorporation. The 1896 Sanborn map showed the plant on Columbia St., backed up to the Erie Canal – perfect for shipping (Figure 12). The adjacent business – immediately to the east – was marked “Window Glass Property (Not in Operation).” The 1901 Sanborn map indicated no changes.

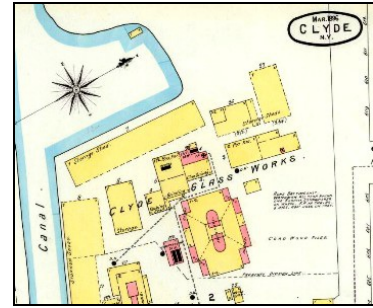


Figure 12 – Factory in 1896 (Sanborn map, 1896)

In 1897, Clyde was listed under the “Green Bottle and Hollowware Factories” section using 18 pots to make its products but had decreased to seven by 1898. Just two years later, the plant was only listed as using 7 pots, but it was up to 30 pots in 1901 and 1902 (*National Glass Budget* 1897:7; 1898:7; 1900:11; 1901:11; 1902:11). When Charles D. Ely died in May of 1903, George O. Baker and William A. Hunt joined the firm (Roller 1997). According to Toulouse (1971:138), “new equipment was making fruit jars” by 1903. The firm installed a continuous gas producer (i.e., to produce natural gas from coal) and new glass melting tanks in May.

By 1904, Clyde made “proprietary, liquor and prescription ware, [and] milk jars” at one continuous tank with nine rings. George R. Bacon was president and manager, with J.R. Miller as secretary, and C.F. Gleason as treasurer (*American Glass Review* 1934:159). W.W. Legg was the vice president by at least 1906; the other officers remained the same. The Thomas Registers included Clyde in its first edition in 1905 as making green glass. By the next edition (1907), the list enlarged the products to include prescription, wine, beer, soda, and brandy as well a listing under fruit and milk jars (Thomas Publishing Co. 1905:105; 1907:159, 798).

The plant added a ten-ton day tank in 1907 and was listed in 1913 as using both mouth-blown and semiautomatic machine techniques to make “medicine, beer and water [i.e., soda]” bottles and “electrical goods” in three continuous tanks with 30 rings (*Journal of Industrial and Engineering Chemistry* 1913:953).⁶ By then, Frank H. Warren was treasurer. The Thomas

⁶ It is unclear what these “electrical goods” were. None of our sources point to Clyde being a manufacturer of telephone or electrical insulators. These could have been much smaller

Registers continued to list the plant as making bottles, fruit jars, and milk jars until 1915 (Thomas Publishing Co. 1915:78, 3307, 3308). In 1915, Clyde made prescription, beer, mineral, and liquor bottles, flasks, and packers' ware (Roller 1997).

The 1912 Sanborn map brought another puzzle. The old window glass plant to the east was gone, and Clyde Glass Works seems to have expanded into that space (Figure 13). However, the eastern property bore this notation: "NOTE: All buildings of the Clyde Glass Works except Storage Building B have been removed." There was no building marked Storage Building B. This must have meant the buildings on the eastern area where the old window glass factory had been. Clyde was still in production in 1912.

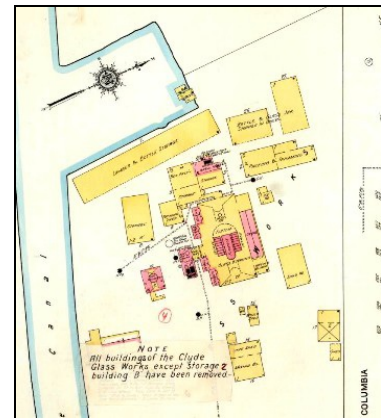


Figure 13 – Factory in 1912 (Sanborn map, 1896)

Clyde ceased operations in July 1915 “with 80 tons of glass still in its tanks” (McKearin & Wilson 1978:174).⁷ Apparently, the firm could not compete with increasingly efficient glass machinery in the industry. On February 13, 1917, S. Emory Budd of Newark, New Jersey, purchased the plant at a foreclosure sale for \$5,200 (*National Glass Budget* (1917:5). The plant was revived by a new corporation as the Clyde Glass Mfg. Co. in 1920 but was again out of business in 1922. The plant made blown and pressed novelties, lighting goods, etc. The C.O. Northwood & Son Glass Corp. purchased the plant at that time but apparently made no glass (Roller 1997; Toulouse 1971:138-139).

Containers and Marks

As noted above, the Clyde Glass Works made a variety of bottles and at least some fruit jars.

insulators than those used on poles – for example. small elongated gobbs of glass with holes on each end to join wires and stop the possible flow of electricity.

⁷ The date was supported by the *American Glass Review* (1934:159). The listing stated that Clyde had been “out of business since 1916.”

CGW

The CGW logo is found on a variety of containers. Typically, the mark is found on heels or bases, always in a horizontal line. With one exception (discussed below), the “G” in the mark was very distinctive. The style of this “wide-angle G” included a downward slash as the serif or “tail” of the letter, but this slash was tilted at a much greater angle than most (Figure 14). For a further study of “G” letters on logos, see the Belleville Glass Co. section).

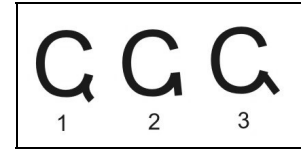


Figure 14 – Tailed G – 1 & 2 normal G; 3 wide-angle G

Toulouse (1971:129) attributed this mark to the Campbell Glass Works, West Berkeley, California, from 1884 to 1885. Whitten (2014) noted the Toulouse identification but added that the mark “could be any one of several Eastern region glass companies, for instance Clyde Glass Works, Clyde, New York; Cumberland Glass Works/Cumberland Glass Mnfg. Co., Bridgeton, New Jersey; or Camden Glass Works, Camden, New Jersey (1875-1884).” See Table 2 for a list of possible users.

Table 2 – Possible Users of the CGW Logo

Name	Location	Date Range	Products
California Glass Works	San Francisco, CA	1881-1883	
California Glass Works	Long Beach, CA	1914-1916	
Camden Glass Works	Camden, NJ	1877-1884	fruit jars, beer
Campbell Glass Works	West Berkeley, CA	1884-1885	med, wine, beer
Colorado Glass Works Co.	Denver, CO	1887-1888	Hutch, beer
Clyde Glass Works	Clyde, NY	1886-1912	fruit jars, med, liquor, milk, beer, soda

Western Hutchinson Bottles (1887-1888)

Toulouse (1971:129) attributed this mark to the Campbell Glass Works, West Berkeley, California, from 1884 to 1885. This was almost certainly a guess based on the initials. We found a single California bottle embossed “CGW” (Fowler 2014), and the dates of the bottler (1908-1917) eliminated Campbell as a maker. However, Hutchbook (Fowler 2014) listed two Colorado Hutchinson



Figure 16 – CGW basemark
(Lynn Loomis collection)

bottles with “CGW” bases. Another Hutchinson bottle with the “CGW” basemark was used by a bottler in Albuquerque, New Mexico (Figures 15 & 16).

Although this mark was not recognized by Clint or Oppelt, it was likely used by the Colorado Glass Works Co. The serif or “tail” of the “G” extended downward, but this one was *not* at the wider angle. Bottles from the

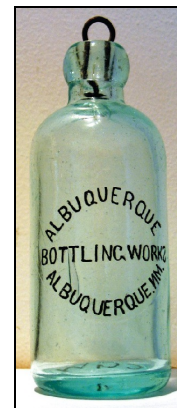


Figure 15 –
Albuquerque
Hutchinson bottle
(Lynn Loomis
collection)

Colorado firm (1887-1888) may be recognized by the

location at or near Colorado, basal position of the logo, and a “normal” “tailed-G” in the mark. See the Colorado Glass Works Co. section for more information.

Eastern Soda and Beer Bottles (1895-1915)

More to the point of this study, there was another user of the CGW logo. Hutchbook (Fowler 2014) listed 13 Hutchinson soda bottles embossed “CGW” on either the front or back heel. Each was made for a soda bottler in New York. Fowler attributed the logo to the Clyde Glass Works. Von Mechow (2014) only listed six bottles with the “CGW” logo – noted as horizontal on the bases – out of 59 that were made by the Clyde Glass Co. Five of these were beer bottles, but one was an unusual Codd-style bottle – with both marble and rubber grommet intact (Figure 17). The Puritan Bottling Works at Tariffville, Connecticut, used the bottle.

Lincoln (1970:47) showed a blob-top bottle (with Hutter-style stopper) embossed on the back heel with “CGW.” Unfortunately, Lincoln provided no other information except that the container was made for the



Figure 17 – CGW
Codd-style bottle
(von Mechow 2014)

Hinckel Brewing Co., Boston, Massachusetts. The location of the logo on the heel of soda and beer bottles probably indicates that they were made by Clyde



Figure 19 – CGW heelmark

Glass. We were able to obtain an example of the Hinckel bottle with the CGW heelmark that noted Hinckel breweries in New York, Boston, and New Hampshire. (Figures 18 & 19). The large number of New York bottles in the sample makes it virtually certain that the mark was used by the Clyde Glass

Works – probably during the incorporation period from 1895 to 1915. The bottle styles reported fit well into that period.



Figure 18 – Hinckel beer bottle

Flasks (1895-1915)

We have located similar CGW logos on the bases of union (strap-sided) flasks offered on eBay auctions. Although all the examples we have found were union style, they were

made with two major manufacturing techniques. Probably, the earliest of these were amber in color and made in two-piece, bottom hinged molds, each with a post bottom and “CGW” embossed in the center of the circle created by the post seam (Figure 20). At least one of these had a one-part applied finish, although others had two-part finishes (Figure 21). A variation was colorless and had a “CGW” heelmark – still made with the same type of molds (Figure 22). These had two-part finishes, probably all tooled, and the words “FULL ½



Figure 21 – Applied and two-part finishes (eBay)

PINT” embossed on the shoulder. Many (possibly all) had a large, round plate on the front body.



Figure 20 – CGW basemark on flask (eBay)

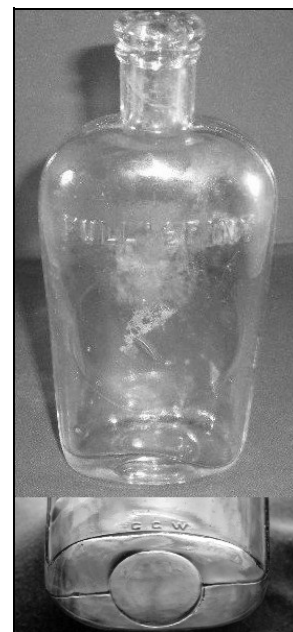


Figure 22 – CGW heelmark on flask

Tod von Mechow provided a different variation, still a union flask, but this one had a cup bottom and was embossed “CGW” in the

center of the base with an anchor superimposed over the letters (with the center post of the anchor bisecting the “G”). These had two-part finishes, probably tooled (Figure 23). Von Mechow noted that such flasks are found in venues on the East Coast, especially Baltimore. It is highly probable that all of these flasks were made by the Clyde Glass Works.

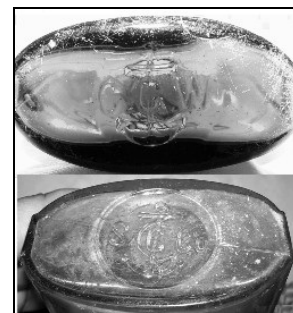


Figure 23 – CGW & SGCo with anchor basemark (eBay; Von Mechow collection)

There is, however, an interesting – although probably spurious – connection between these flasks and similar ones with embossed “SGCo” basemarks (see Figure 23). The literature is oddly silent about these flasks. Strap-sided Union Oval flasks abound in general, and they seem to have been made sometime between the early 1860s and the very early 1920s. However, the ones marked with “SGCo” or “CGW” (both with and without anchors) are virtually absent from archaeological reports and collectors’ books. Despite this apparent absence, the flasks are particularly known from the Baltimore area. The flasks marked “SGCo” were almost certainly made by the Severn Glass Co., Annapolis, Maryland, between 1898 and 1902 (see the Severn Glass Co. section for more information).



Figure 24 – CGW-SGCo flask comparison (Von Mechow collection)

The flask/mark combinations have several things in common that *could* link two manufacturers together:

1. Users of both initials made strap-sided Union Oval flasks.
2. Both sets of initials, superimposed on a single anchor, are found embossed on bases – as are initials only – with no anchor (Figure 24).
3. Each set of initials is found on both post-bottom and cup-bottom baseplates.
4. Each set of initials is found on both amber and aqua flasks.
5. The “G” in both marks has the serif extending downward.
6. Each often has a large round plate on the front body.

Two interesting oddities stand in contrast:

1. CGW is found on post-bottom mold flasks *without* the anchor and on cup-bottom molds *with* the anchor. SGCo flasks are just the opposite: post-bottom *with* anchor – cup-bottom *without*.
2. The serif or “tail” of the “G” in “SGCo” extends almost straight downward – notably different from the “wide-angle G” on “CGW” flasks.

Because our sample is small (n=10), these connections may be spurious. We explored glass plants in the Baltimore area for plants with the proper CGW initials but only found the Crystal Glass Works, used by the Swindell Bros. However, we have no evidence that the Swindells used any form of CGW logo (see the Swindell Bros. section for more information). Therefore, the flasks were likely made by the Clyde Glass Works.

Other Bottle Types

Whitten (personal communication) described “one bottle with a ‘C.G.W’ mark on the base. It is an aqua rectangular medicine bottle (5 and 1/2 inches tall), 1 x 1 3/4ths inches base measurements, embossed ‘FOUTZ’S LINIMENT / DAVID E. FOUTZ / BALTIMORE MD’ lettered vertically, in a sunken panel on the front.” Although we lack photos, the Baltimore location sets this almost certainly as a Clyde Glass Works bottle.



Figure 25 – Turlington bottle – front & back (eBay)

Our final example was a small bottle offered on an eBay auction. The front was embossed “BY THE / KING’S / ROYAL / PATENT / GRANTED” with “ROBT / TURLI / NGTON / FOR HIS / INVENTED / BALSAM / OF LIFE” (Figure 25). The sides were embossed “LONDON” and JANY” respectively (Figure 26). The cup-bottom base was embossed “CGW” – with the distinctive wide-angle “G” – in a concave center section (Figure 27). The bottle was machine made – note the horizontal seams at the center



Figure 26 – Turlington bottle – sides (eBay)

and the base of the finish – although the crudeness of the seams and the offset of the top plate indicates a manufacture by an early machine. The bottle was probably made by the Clyde Glass Works – although we have not found any evidence for the use by the plant of a narrow-mouth bottle machine.

Rawlinson (1969:378-383) discussed the history of Turlington Balsam and its bottles. Robert Turlington applied to King George II for a patent for his medicine on January 18, 1744, and received Patent No. 596 in May of the same year. A decade later (1754), there had already been so many patent violations that Turlington commissioned “pear” shaped bottles embossed similarly to the one described above.



Figure 27 – Turlington bottle – base (eBay)

The original bottles had “BY” on its own line, and the side was embossed “JANUY 26, 1754.” We may never know why the Clyde bottle was only embossed “JANY.” By the 1820s, Thomas W. Dyott, a Philadelphia glass maker was producing Turlington bottles. U.S manufacturer’s continued to offer Turlington bottles until ca. 1900.

CLYDE

Whitten (2014) identified “Clyde” with the same firm but dated it 1868-1912. Von Mechow (2014) also included “CLYDE” in a horizontal format as one mark used by Clyde Glass, although there were none listed in his individual breakdown of 59 bottles from the factory. Kroll (1972:81) reported that one beer bottle used by the Pabst Brewing Co. (Milwaukee) was marked “CLYDE.” Unfortunately, he did not note the configuration or placement (heel or base) of the mark. The bottle was amber in color, and he rated it scarce to rare. This container probably was embossed “CLYDE GLASS WORKS” (see below).

Giarde (1980:24) noted that Clyde made milk bottles at some point between 1895 and 1916 but that “the period of 1903 to 1916 represents the one in which it is most likely the milk bottles were made. However, he had not found the CLYDE logo or any other mark indicating the company on any milk bottles.

Fruit Jars

Our typical fruit jar sources listed a total of five fruit jars made by the Clyde Glass Works: The Clyde (cursive), CLYDE LIGHTNING, CLYDE MASON'S IMPROVED, and both Mason's Improved and Mason's Patent jars made for the Consolidated Fruit Jar Co. The jars made for Consolidated were addressed in the Early Glass Factories section (above), but the others need to be treated individually. It is interesting that our best estimates for jar production indicate an empty period between ca. 1882 and ca. 1895. It is likely that Clyde Glass made *some* kind of fruit jar during that period, probably a Mason's Patent or Mason's Improved jar that lacked any glass house identifying mark. See Table 3 at the end of this Fruit Jar section.

The Clyde (ca. 1895-1915)

Toulouse (1969:68) listed this jar as handmade with an old-style Lightning closure. The front was embossed "The Clyde" in upwardly slanted cursive. In his later book, Toulouse (1971:137) dated the jar ca. 1895. Roller (1983:88) dated the jar ca. 1890s-early 1900s. Creswick (1987a:30; 1937b:37) illustrated the jar and noted that it was colorless but "will turn amethyst" (Figure 28). She dated the jar ca. 1885-1895. Jerry McCann added that "ground-lip jars have narrow mouths while the smooth lip version has a regular size mouth" (Roller 2011:135). McCann (2014:144) added that the lid was embossed "CLYDE GLASS WORKS CLYDE, N.Y."



Figure 28 – The Clyde (Creswick 1987a:30; eBay)

The only example we have seen on eBay was mouth blown (see Figure 28). The jar and lid were as described above, but the jar had a post-bottom base (Figure 29). These were probably first made in 1895 to commemorate the incorporation of the Clyde Glass Works. If the Toulouse (1971:138) report of "new equipment . . . making fruit jars" by 1903 indicated the use of machines that early, then the Roller dates for these jars were probably correct. It is highly likely that the



Figure 29 – The Clyde lid & base (eBay)

mouth-blown jars are more common in collections because they were produced longer. The machine-made jars were probably made for a short time during 1903 or slightly later. Thus the range for the jars is ca. 1895-ca. 1904.

Toulouse (1969:68) reported a similar jar that was unmarked but had a lid as described by McCann. This was likely a case where someone had placed a Clyde lid on another jar. No other source reported this variation.



Figure 31 – The Clyde lid (eBay)

Roller (1983:88) noted a variation with “The Clyde in circular plate.” Creswick (1937b:37) also listed the same variation and stated that the jar had a “smooth lip” (machine-made). She dated

this one ca. after 1895. The only example we have found on eBay included photos of the jar (Figure 30), the lid (Figures 31), the smooth rim, and the base (Figure 32) – clearly showing a valve scar. Since these jars were machine made, they followed the earlier ones and were likely produced between ca. 1904 and the closure of the plant in 1915.

Although the Creswick drawing (see Figure 28) and the eBay photo of the non-plate jar (see Figure 28) show an identical cursive “e” in both “The” and Clyde,” the eBay photo of the plate variation (see Figure 30) has a distinct “c” at the end of “Clyde” (Clydc) that is a different type of letter from the “e” at the end of “The” – so this is not a stylistic change. This error was not mentioned in any source, including Leybourne (2008:103) or Roller (2011:135) – typically the best indicators of variations.

CLYDE LIGHTNING

Toulouse (1969:69) noted a jar embossed “CLYDE / LIGHTNING” on the side. He described the jar as mouth blown (ground rim), green in color, and sealed with an old-style



Figure 30 – The Clyde – circle (eBay)



Figure 32 – The Clyde finish & base (eBay)

Lightning closure. He dated the container ca. 1895. It should be noted that Toulouse erroneously thought that the Clyde Glass Works did not exist by that name during the 1885-1895 period; therefore, his use of “Circa 1895” for dating jars from the Clyde plant is a bit misleading. Roller (1983:88) used the same information but dated the jar ca. 1890s. Creswick (1987a:31, 122; 1987b:37) again used the same description and date but included no drawing. The 2011 Roller update (Roller 2011:135) listed the jar as “Deleted” and referred to the 1983 edition. The container was also absent from the Fruit Jar Annual (McCann 2014:144-145). The unmistakable conclusion is that this jar does not exist. It probably all began with a garbled, hand-written letter to Toulouse – an identification that probably intended to describe The Clyde (see above).

CLYDE MASON’S IMPROVED

With this jar, Toulouse (1969:68) was almost certainly acting on information sent to him in a handwritten letter. He stated that the jar was handmade and embossed “three lines: ‘CLYDE,’ ‘IMPROVED,’ and ‘MASON.’” He included a variation embossed “‘CLYDE’ over ‘MASON.’” He dated the jars “Circa 1882-85 or after 1895” reflecting his belief that the factory was closed, inoperable, or otherwise not using the place name during the 1885-1895 period.

Roller 1983:88; 2011:88) included the correct order “CLYDE MASON’S IMPROVED” and noted the glass insert and metal screw band closure that was stamped “CLYDE GLASS WORKS CLYDE, N.Y.” He dated the jars ca. 1890s-1910s and noted that “both ground lip and smooth lip jars studied have been machine made. Why the lips were ground on some jars is not clear.” Creswick (1987a:30-31, 122) illustrated both the jar and the lid, showing the correct embossing as “CLYDE / MASON’S / IMPROVED (all in slight arches)” on the front with “CLYDE GLASS WORKS (arch) / CLYDE, N.Y. (inverted arch)” on the glass insert (Figure 33). She repeated the Toulouse dates.

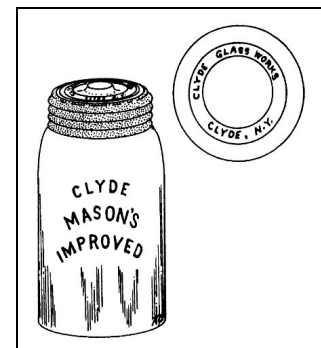


Figure 33 – Clyde Mason’s Improved (Creswick 1987b-37)

If the “new equipment” that Toulouse (1971:138), noted as “making fruit jars” by 1903 included semiautomatic machines, then it is reasonable to assume that these jars were first made about that time. We have found no evidence of earlier machine use. The jars were probably made until the plant closed in 1915.

The machine-made jars with ground rims are intriguing. Two eBay photos showed the machine base and ground rim (Figure 34) of one of these jars. The base had a valve scar typical of a press-and-blow machine. It is possible that the workers – unused to machine production – took the freshly made jars and placed them in the grinding machine, until the plant manager spotted the error and rectified the situation.

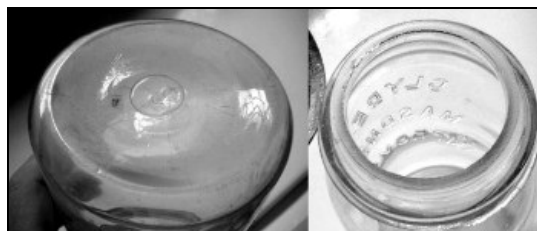


Figure 34 – Mason’s machine base & ground rim (eBay)

Table 3 – Probable Dates for Clyde Glass Works Fruit Jar Variation

Dates	Distinctive Markings	Firm
ca. 1865-1868	Mason’s Patent; S&R basemark	Southwick & Reed
1868-ca. 1870	Mason’s Patent; SR&Co basemark	Southwick, Reed & Co.
ca. 1870-ca. 1874	Mason’s Patent; CLYDE, NY. on reverse	Southwick, Reed & Co.
ca. 1874-ca. 1882	Mason’s Improved; CLYDE, N.Y. on reverse	Southwick, Reed & Co. Ely, Reed & Co. Ely, Reed & Hoyt
ca. 1882-1895	Mason jars; no glass house identification	Ely, Reed & Hoyt
1895-ca. 1904	The Clyde (no plate)	Clyde Glass Works, Inc.
ca. 1904-1915	The Clyde (plate)	Clyde Glass Works, Inc.
ca. 1903-1915	CLYDE MASON’S IMPROVED	Clyde Glass Works, Inc.

CLYDE GLASS WORKS

Whitten (2014) identified “Clyde Glass Works” as being used by the plant from 1868 to 1912. The logo seems to have been used in two venues: soda/beer bottles and flasks.

Soda and Beer Bottles (1895-ca. 1910)

Von Mechow (2014) showed the logo as “CLYDE GLASS WORKS (arch) / CLYDE

(horizontal) / N.Y. (inverted arch)” – used on soda and beer bottles. Out of 59 bottles identified by von Mechow as being made by Clyde, 51 were in the arched format. Two others had the same information but lacked the



Figure 36 – CLYDE GLASS WORKS base (eBay)



Figure 37 – CLYDE GLASS WORKS base (eBay)

notations for the arch and inverted arch – probably because that information was not reported to von Mechow. The remaining six were discussed above in the CGW section. Several bottles with the Clyde Glass Works embossing have appeared on internet sites, including eBay and AntiqueBottles.net on various types of beer and soda bottles (Figure 35). A few bases have had double stamps, especially on the word “CLYDE” (Figure 36). All the examples listed by von Mechow were mouth blown as were those in the few photos we have seen. It is likely that these were made from 1895 to 1910 or later. Both the bottle styles and double stamped bases fit well into that time period.

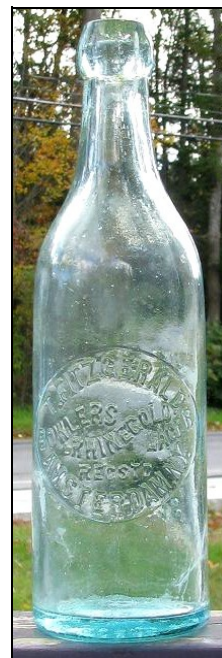


Figure 35 – Champagne beer bottle (AntiqueBottles.net)

At least one generic (i.e., no side embossing) export beer bottle had a base embossed “CLYDE GLASS WORKS (arch) / N.Y. (inverted arch)” (Figure 37). This mark was in no source that we found.

Flasks (1864-ca. 1880)

Freeman (1964:136) listed a liquor flask marked “Clyde Glass Works N.Y.” – but he provided no additional information about either the mark or the glass house. McKearin & Wilson (1978:174, 673) discussed three slight variations of the flask – although they fell into two main divisions. One had a finish that the McKearins (1978:519) described as “tooled, broad flat collar sloping to heavy rounded ring.” The other two had a “double round collar” (double ring) finish. All had bases made by a bottom-hinge, two-piece mold with a post bottom, and all embossed “CLYDE GLASS WORKS (arch) / N.Y.” These were



Figure 38 – CLYDE GLASS WORKS flask (Norm Heckler)

made in amber, aqua, green, and colorless glass. McKearin & Wilson dated the flasks 1864-ca. 1880. The only examples we have found were the double-ring-finish variation from a Norman C. Heckler auction. One Heckler photo showed the side seam extending to the base of the finish (Figure 38).

Other Products

Various fire grenades have been offered for sale at internet sites (including eBay auctions), and some of these – embossed with a lion’s head motif – were purportedly made by the Clyde Glass Works (Figure 39). Fire grenades were generally round and were filled with salt water or carbon tetrachloride. They were to be thrown at the base of a fire, where heat or some hard surface would break the glass, releasing the chemical to douse the flames.



Figure 39 – Lion’s head fire grenade (eBay)

Discussion and Conclusions

The glass works at Clyde, New York, had a long and varied history. Although it is almost certain that Clyde never marked the majority of its containers, certain types of both bottles and jars were clearly identified as being produced at the plant. The earliest of these were jars. It is likely that the Mason’s Improved jars with “S&W” and “SW&Co” were made by Southwick & Reed and Southwick, Reed & Co., respectively. These were almost certainly the earliest marked jars, during the 1864-ca. 1870 period.

The Mason’s Patent and Mason’s Improved jars, embossed with the CFJCo monogram on the front and “CLYDE, N.Y.” on the reverse, were likely made by the plant during the ca. 1870-1882 period. Jars made between 1882 and ca. 1890 must have had no Clyde logos. The plant made The Clyde from ca. 1890 to ca. 1910, and produced the Clyde Masons’s Improved from ca. 1895 to 1915. A few soda and beer bottles, as well as flasks, bore the Clyde name during the 1880-1910 period or later. The plant had an important place in New York glass history.

Acknowledgments

We are grateful to Doug Leybourne for granting us permission to use the Alice Creswick drawings and to Greg Spurgeon for letting us reproduce jars from North American Glass.

Sources

American Glass Review

1934 *Glass Factory Yearbook and Directory*. American Glass Review, Pittsburgh, Pennsylvania. Includes reprint of the *Glass Trade Directory for 1904*. Commoner Publishing Co., Pittsburgh, Pennsylvania.

Creswick, Alice

1987a *The Fruit Jar Works, Vol. I, Listing Jars Made Circa 1820 to 1920's*. Douglas M. Leybourne, N. Muskegon, Michigan.

1987b *The Fruit Jar Works, Volume II, Listing Jars Made Circa 1900 to Modern*. Privately printed, Grand Rapids, Michigan.

Fowler, Ron

2014 "Hutchinson Bottle Directory." Seattle History Co., Hutchbook.com.
<http://www.hutchbook.com/Bottle%20Directory/>

Freeman, Larry

1964 *Grand Old American Bottles*. Century House, Watkins Glen, NY.

Giarde, Jeffery L.

1980 *Glass Milk Bottles: Their Makers and Marks*. Time Travelers Press, Bryn Mawr, California.

Journal of Industrial and Engineering Chemistry

1913 "The Present Status of the Glass Bottle and Hollow Ware Industries in the United States." *Journal of Industrial and Engineering Chemistry* 5(11):951-954.

Kroll, Wayne, L.

1972 *Wisconsin Breweries and Their Bottles*. Privately Published, Jefferson, Wisconsin.

Lincoln, Gerald David

1970 *Antique Blob Top Bottles, Central and Southern New England*. Privately published, Marlboro, Massachusetts.

McCann, Jerry

2014 *The Guide to Collecting Fruit Jars: Fruit Jar Annual, Volume 18 – 2014*. Privately Published, Chicago.

McKearin, Helen and Kenneth M. Wilson

1978 *American Bottles & Flasks and Their Ancestry*. Crown Publishers, New York.

National Glass Budget

1897 “Glass Directory.” *National Glass Budget* 12(42):7.

1898 “Flint, Green and Cathedral Glass Factories of the United States and Canada in Operation.” *National Glass Budget* 13(38):7.

1900 “Complete List of Glass Factories in the United States and Canada.” *National Glass Budget* 15(48):11.

1901 “Complete List of Glass Factories in the United States and Canada.” *National Glass Budget* 17(1):11.

1902 “Complete List of Glass Factories in the United States and Canada.” *National Glass Budget* 17(52):11.

1917 “Clyde Glass Works Sold.” *National Glass Budget* 32(39):5.

Oppelt, Ted

2005 "Colored Hutchinson Sodas in the United States." *Antique Bottle & Glass Collector* 20(4):10-13.

Pottery, Glass & Brass Salesman

1919 "Interesting Old Document Found in a Bottle." *Pottery, Glass & Brass Salesman* 20(1):9.

Rawlinson, Fred

1969 "The Pear Shaped Mr. Turlington." *Western Collector* 7(8):378-383.

Roller, Dick

1983 *Standard Fruit Jar Reference*. Privately published.

1997 "Clyde, NY History Notes." Dick Roller files.

2011 *Standard Fruit Jar Reference: 2011 Update*. Edited by Jerome McCann and Barry Bernas. Fruit Jar Annual/Phoenix Press, Chicago.

Thomas Publishing Co.

1905-1906 *The Buyers' Guide: Thomas' Register of American Manufacturers and First Hands in all Lines*. Thomas Publishing Co., New York.

1907-1908 *Thomas' Register of American Manufacturers and First Hands in all Lines: The Buyers Guide*. Thomas Publishing Co., New York.

1915 *Thomas' Register of American Manufacturers and First Hands in All Lines: A Classified Reference Book for Buyer and Sellers*. Thomas Publishing, New York.

Toulouse, Julian Harrison

1969 *Fruit Jars*. Thomas Nelson & Sons, Camden, New Jersey.

1971 *Bottle Makers and Their Marks*. Thomas Nelson, New York.

Tyson, Scott

1971 *Glass Houses of the 1880's*. Privately published, East Greenville, Pennsylvania.

von Mechow, Tod

2014 "Soda & Beer Bottles of North America: Bottle Attributes - Beer & Soda Bottle Manufacturers." <http://www.sodasandbeers.com/SABBottleManufBeerSoda.htm>

Whitten, David

2014 "Glass Factory Marks on Bottles." <http://www.glassbottlemarks.com/bottlemarks/>

First published 7/25/2014; last updated 10/31/2024